

IP Power 9855 W

User Manual



Version: 1.05
Firmware Version: V1.16
Date Released: July. 2024

Warning: Any changes made to this equipment without permission may cause damages to the device!

IMPORTANT NOTICE

1. IP Power 9855 W was designed for indoor use, we carry no responsibility for possible damages caused by outdoor use, especially in the rain.
2. Please use the power adapter provided by the dealer, we carry no responsibility for the possible damage from using power adapters not provided by us.
3. Do not shake the IP Power 9855 W in any fashion.
4. Please contact the dealer if IP Power 9855 W is not working properly.

Copyright © 2024 All rights reserved. No part of this publication may be reproduced, stored in a retrieval system, or transmitted in any form or by any means, electronic, mechanical, photocopying, recording or otherwise, without the prior written consent of us.
All trademarks and products mentioned in this document are the properties of us.

Table of Content

1.Introduction	5
2.Product Information.....	6
2.1 Features	6
2.2 Minimum System Requirements	7
2.3 Package Contents.....	7
2.4 Interface Description.....	8
3.Setting up your device.....	9
3.1 Before Starting.....	9
3.2 Change settings	9
3.3 Hardware Connection	11
3.4 Software Installation	12
3.3.1 LAN connect by IP search software “ IPEDIT ”	12
3.3.2 Internet Setup	14
3.3.3 Using IP Service	15
3.3.4 mDNS connection.....	16
4. Web Interface.....	17
4.1 Connect to your device.....	17
4.2 Top Column	18
4.2.1 Device name	18
4.2.2 Date and Time.....	19
4.3 Power Control	21
4.3.1 Control.....	21
4.3.2 Schedule.....	24
4.3.3 Ping.....	26
4.3.4 QR code	30
4.4 Network.....	33
4.4.1 Interfaces	33
4.4.2 Wireless	36
4.4.3 802.1X Client.....	39
4.4.4 Webport	40

4.5 System.....	42
4.5.1 Management	42
4.5.2 Information	46
4.5.3 Email.....	47
4.5.4 System Log	48
4.5.5 Backup / Flash firmware.....	50
4.5.6 Reboot.....	51
4.6 Application.....	52
4.6.1 IP Service.....	52
4.6.2 SNMP	54
4.6.3 Network UPS Tools	56
4.6.4 Watchcat	59
4.6.5 Wake on Lan.....	64
5. Other ways to control	65
5.1 CGI HTTP Commands	65
5.2 SSH commands	67
6. FAQ :	68

1.Introduction

IP Power 9855 W is a new generation of the Power Distribution Unit (PDU) & Remote PowerControl (RPC) system which add "Active Spike Filter Design" in the hardware design and make the system with higher grade stability.

With embedded web server and **HTTPS** protection, 9855 W supports higher grade security as working on Internet. User can control power easily and more safely through the web browser in Windows, Android or iOS system, like Internet Explorer (IE) / **Edge**, Google Chrome, Safari web browser.

As support **SSL & SNMP**, user can use public email like Gmail / Hotmail / Yahoo Mail to get the email as the ON/OFF status changed.

9855 W supports **Auto Ping, Time Scheduler** which is more suitable for factory / commercial / office / home automation. User can get the device status in LOG information or in remote IP address which sent to get LOG message from 9855 W (SYSLOG).

For system integrator, there are several popular developing tolls like HTTP/CGI command, SSH, **SNMP**

User Friendly. Convenience & Powerful,



2.Product Information

2.1 Features

1. Single port Remote power controller for power On, Off and Reboot by the internal power switching use 40A relay.
2. Add " Active Spike Filter Design" for higher stabilities.
3. Current meter up to 10 Amp
4. Web Server built-in design, directly control by web browser in Windows, **Android** or **iOS** system like Internet Explore (IE), Google Chrome and so on.
5. Support **HTTPS**, SSL , TCP/ IP , DHCP, DDNS , SMTP , **SSH** ,and **SNMP**
6. **SYSLOG** : Support Log function & send to assign IP address
7. Time Schedule - can pre-set a suitable time to turn power on / off automatically.
8. **Auto Ping** for network control & segment management automatically
9. High grade components for long stability and performance
10. **Back Up** for quick setup for multiple devices.
11. Support public e-mail -- @gmail.com , @yahoo.com , @hotmail. com.....etc.

12. Specific software developed by Aviosys and provided free of charge :
 - SDK Available : HTTP Command
 - Windows software " IP Power Center " : Control Multiple Aviosys IP Power devices in one software
 - CNT software (Cross Network Technology)- allows user eliminate set up work on any Router without port forwarding , simply Plug & Play .

13. Support different models with different power plug, ex: USA, UK, GE, FR, AU etc.....

14. **USB Port** - to get the information of external UPS device .

Specification

- Power input: 100A~240VAC C14 in, 10A
- Maximum of Total loading: **15 A**
- Dimensions: 86 x 86 x 80 mm (L x W x H)
- Weight: 314.6 g
- Enclosure – Plastic case in white color
- Operating **Temperature**: 0~50 °C
- Note: The internal power switching relay support up to 40A and support inrush current up to 350A immunity.
Phase shift switching circuit prevent contact EMI and spike.

2.2 Minimum System Requirements

- Network & Web Browser & Internet Connection
- Ethernet Cable & Power Cord

2.3 Package Contents

- 9855 W Unit
- Online CD note : www.aviosys.com/cd

2.4 Interface Description

Outlook



Front :	
Ethernet	LAN 10/100 Mbps network for Internet
USB port	Connect for UPS to get power information.
LED (status)	Display the outlets as ON (Green) or OFF (RED)
Reset	Please keep pressing the button for 7 seconds and then release. You will hear 3 short beep sound which show the reset Successfully. After reset, all the settings, like IP, password and so on , will be back to Default.
Back:	
Input :	100A~240VAC C14 in, 10A
Top:	
Output	The Power output is on the top of the device. Simply plug in the device that you world like to control power. (Comes in different plug standards)

3. Setting up your device

3.1 Before Starting

*Before setting up the device make sure of the following:

- 1.) All the package contents are all included if anything is missing please contact the dealer where the device was purchased from.
- 2.) Check the power input cable is working correctly.
- 3.) Check all cables to make sure there are no problems with it.



3.2 Change settings

Before you change the settings in 9855 W, please read this how the saving settings works in 9855 W.

For example:

In the network-interface webpage, we can see this image that settings didn't change before adjustment. In the right-down corner, you can see three icon: Save & apply, Save and Reset.

interface

lan  br-lan	Protocol: DHCP client Uptime: 1d 20h 52m 43s MAC: 00:76:56:00:43:21 RX: 147.97 MB (943404 Pkts.) TX: 13.67 MB (83652 Pkts.) IPv4: 10.33.122.43/24	Edit
lan6  br-lan	Protocol: DHCPv6 client Uptime: 1d 20h 54m 5s MAC: 00:76:56:00:43:21 RX: 147.97 MB (943404 Pkts.) TX: 13.67 MB (83652 Pkts.) IPv6: 2001:b011:3801:3388:276:56ff:fe00:4321/64	Edit

[Save & Apply](#) [Save](#) [Reset](#)

Save & Apply: Save and apply your device settings.

Save: Save only, the device will remain your adjustment, but won't apply the settings.

Reset: Recover the settings before you click "save & apply" or "save" new changes.

If you want to change the setting once and for all, then click Save & Apply, the changes setting will apply immediately. But if you want to save the setting but don't want apply immediately, click the save bottom.

Save:

If you want to change the settings, only click the save bottom, it will happen like this. Not only the setting section changed but also can see the unsaved change in the right top. This means you didn't finish your setting, and the system help you save the setting if you want to apply it.

ER 2023/06/21 06:01:50 Refreshing Unsaved Changes: 4

interface

lan Alias of "lan"	Protocol: Alias Interface (DHCPv6 client) Interface has 4 pending changes	Edit
lan6 br-lan	Protocol: DHCPv6 client Uptime: 1d 21h 1m 15s MAC: 00:76:56:00:43:21 RX: 148.50 MB (947101 Pkts.) TX: 14.17 MB (84927 Pkts.) IPv6: 2001:b011:3801:3388:276:56ff:fe00:4321/64	Edit

Save & Apply Save Reset

Click the Unsaved changes you will see the small screen shows " Configuration / Changes ". It show the section you have added, changed or removed, the changes based on different colors to show how many section you want apply.

If you don't want " Save & Apply " the settings, click the " revert ", the settings will turn back to the original settings before saving.

IP_POWER 2023/06/21 06:01:09 Refreshing Unsaved Changes: 4

Power Control interface

Network Interfaces

lan Protocol: Alias Interface (DHCPv6 client)

Configuration / Changes

Legend:

- Section added
- Section removed
- Option changed
- Option removed

```
# /etc/config/network
uci set network.lan.proto='dhcpv6'
uci set network.lan.device='@lan'
uci set network.lan.reqaddress='force'
uci set network.lan.reqprefix='auto'
```

Close Save & Apply Revert

3.3 Hardware Connection

Before hardware connection, please make sure that there is no more than 2 network cards(include dynamic network card). If there are more than two network card in your PC. You may not get the IP address of 9855 W

Please connect the 9855 W under your router or to the PC directly.

The default IP of 9855 W is 192.168.1.168 .

To log in to the 9855 W directly, please make sure the IP address of you PC is also the same segment as the 9855 W, like 192.168.1.XXX (XXX = 1~254) or you may not log in the 9855 W webpage as different segment .

User can change the FIX IP mode to DHCP mode through our IP search tool “ IPEDIT “ or through the 9855 W webpage as log in. As change to DHCP mode, 9855 W will get the IP address from user`s router.

The way to use IPEDIT to change 9855 W as DHCP is as following :

Step 1 : Select the 9855 W IP show in the IPEDIT. It shows FIX IP below MAC address section.

Step 2: Select DHCP area and click “ Submit “ then it will ask to type the username and password.
Please fill root & 12345678 and click OK / setup.

Step 3: Wait for one minute for 9855 W reboots up and click the rescan button in IPEDIT to get the new IP address which is assigned from your DHCP router. Then you can also find the 9855 W show DHCP in IPEDIT tool.

3.4 Software Installation

Please go to our webpage www.aviosys.com/cd to get the software and manual of your product.

Under windows system, we offer two software:

1. IP Edit (Require to search IP address)
2. IP Power Center (For multiple IP Power devices control purpose)



- 1.) Select the IP Power 9855 W
- 2.) All the available downloads for the 9855 W will be shown
- 3) Download the required software – **IPedit.exe** - by clicking on the download button.



Then you can select to connect 9855 W.

3.3.1 LAN connect by IP search software “ **IPEDIT** ”



IP Edit is a search tool designed to search, configure, or access the IP Power 9855 W from a localnetwork computer.

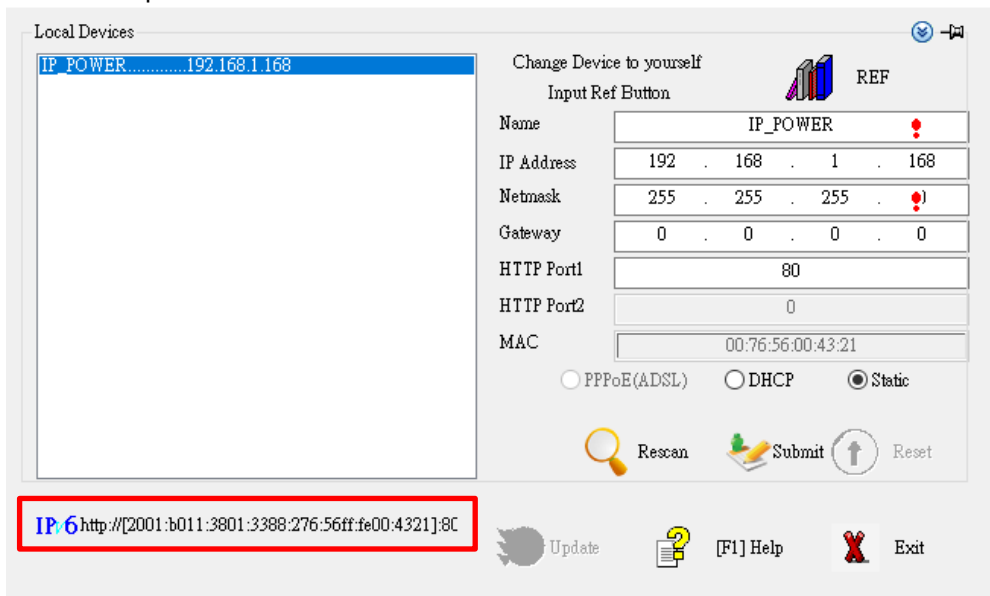
IP Power 9855 W Default Login / Password

Default IP: 192.168.1.168
Default Login username : root
Default Password: 12345678

Please use our IP Search tool “ IPEDIT.exe ” to get the IP address of 9855 W .

1.) In the local devices section user will see user device shows up if connection is correct.

For example:



The default IP of 9855 W is 192.168.1.168 .

- **Red rectangle** show the **IPv6** address of IP9855 W, only IP9855 series can display the **IPv6** address.

To log in to the 9855 W directly, please make sure the IP address of you PC is also the same segment as the 9855 W, like 192.168.1.XXX (XXX = 1~254) or you may not log in the 9855 W webpage as different segment .

User can change the FIX IP mode to DHCP mode through our IP search tool “ IPEDIT ” or through the 9855 W webpage as log in . As change to DHCP mode, 9855 W will get the IP address from user`s router.

The way to use IPEDIT to change 9855 W as DHCP is as following :

- Step 1 : Select the 9855 W IP show in the IPEDIT. make sure your device is connect the one you want to modify, check the Mac address. You can check the Mac in the bottom of device.
- Step 2: Select DHCP icon and click “ Submit “ then it will ask to type the username and password.
Please fill root & 12345678 and click OK / setup.
- Step 3: Wait for one minutes for 9855 W reboot up and click the rescan button in IPEDIT to get the new IP address which is assigned from your DHCP router. Then you can also find the 9855 W show DHCP in IPEDIT tool.

Notice:

If can't see the IP in the area of Local Devices of IPEDIT.exe. Please check the following situation

1. **Boot up successfully:** Please reboot the 9855 W and check if there are 1 short beep after 1 minutes. This beep means the device boot up successfully. If not, the device may have issue.
2. **Network card:** Please check if there are more that two network card – include wire / wireless / dynamic - in the PC which used IPEDIT software . IPEDIT only support single network PC, please disable the other network connection / functions.
3. **Anti Virus software / Firewall:** Please turn off the antivirus software firewall temporary.
4. **Connection:** Please make sure that the 9855 W is under same router with the PC used IPEDIT. It is fine to connect across multiple routers but it need to setup the MASK part which need some knowhow.

Notice :

Segment : The first 9 digits of the IP Address .

EX: The IP of user PC is 192.168.100.122. If the “ Local IP Address “ at Wi-Fi Info is 192.168.100.x (X can the value of 1~254) , user PC can get into the webpage of 9855 W .

3.3.2 Internet Setup

To connect the IP Power 9855 W on Internet, there are two ways

- Setup Port Mapping / Port Forwarding in your router. Please check your Router owner's manual .
- Use our own software “ IP Power Center “ : Please refer to the “IP Power Center “ manual in software section of www.aviosys.com/cd
- Use mDNS connection through your IP9855 W MAC address to login. Please refer to 3.3.4.

3.3.3 Using IP Service

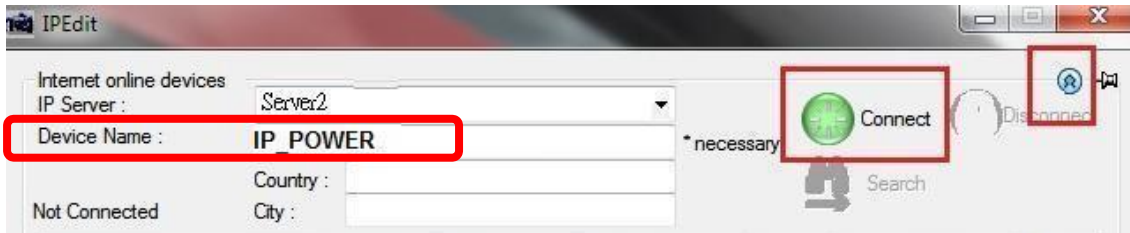
IP Service is a function which allows user to search for the device easily without having to remember long complicated IP address. Instead, if user know the device's name of user's IPPower device and user can easily find IP Address with IP Service. **To log in the webpage of 9855 W on Internet, user still need to do the "Port Forwarding" in own router.**

Before using "IP Service", please change the device name of user 9855 W to avoid similar name in Host Server.



1.) Open IP Edit and select the server that user's 9855 W is designated to.

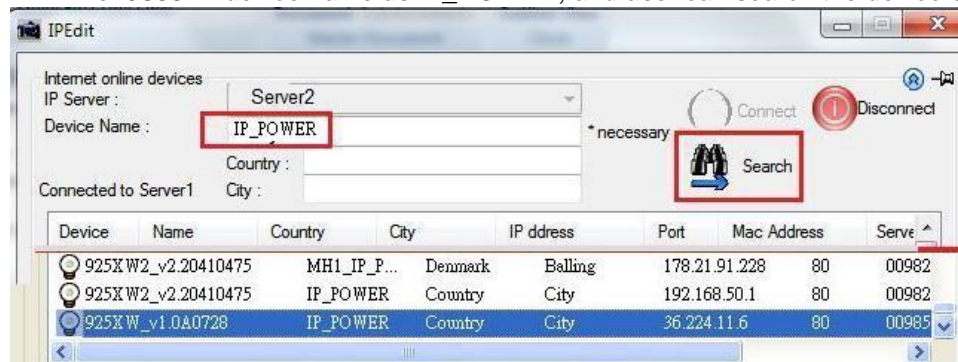
2.) Hit the Green Connect button on the top of IP Edit.



3.) Then type in the 9855 W Name that user have selected for the device and press the Search button.

4.) Find user device and double click on the screen and a IE window will pop up connecting to user device. *User device must be Port Forwarded for the login screen to appear.

EX: The 9855 W device name as IP_POWER, and user can search the device easily :



5.) After user has connected to user device, type in the Login and Password for user device

3.3.4 mDNS connection

You can log in to your IP9855 W without using its IP address. With mDNS support, you only need to type: “ ip_power.local ” to access the 9855 web UI.

If you have multiple IP9855 W devices connected to the same PC, you can't use “ ip_power.local.” Please locate your MAC address, which is on the side of your device. Use the last two digits of the IP9855 W MAC address to connect.

Please follow the instructions below:

Only one IP9855 W connected to the PC

- (1) Open any web browser (recommand Chrome, Edge).
- (2) In the address bar, type “ ip_power.local ” and press Enter.

2. Multiple IP9855 W or others 9855 devices connect in the same PC.

- (1) Find your device's MAC address, which is located on the side of your device.

MAC example: 007655000520

- (2) Open any web browser (recommand Chrome, Edge)
- (2) In the address bar, type “ ip_power_XX.local ”, where XX is the last two digits of your 9855 W MAC address.

Example: If the MAC address is 007655000520, type “ ip_power_20.local. ”

After typing the address in your browser's address bar, press enter. You will see the login screen. Indicating that you have successfully connected to your IP9855 W.

4. Web Interface

4.1 Connect to your device

Once the 9855 W has been setup correctly, log into the device.

First Option

- 1.) Go to IP Edit to find the device that is being used
- 2.) Double click on the device linked and an IE window will appear with the loading screen

Second Option

- 1.) Open Internet Explorer type in the IP Address of the device followed by the : sign.
For example: http:192.168.122.188:9258
192.168.122.188 – IP Address
- 2.) Once you have typed in the IP address of the 9855 W and it is ready to be worked.

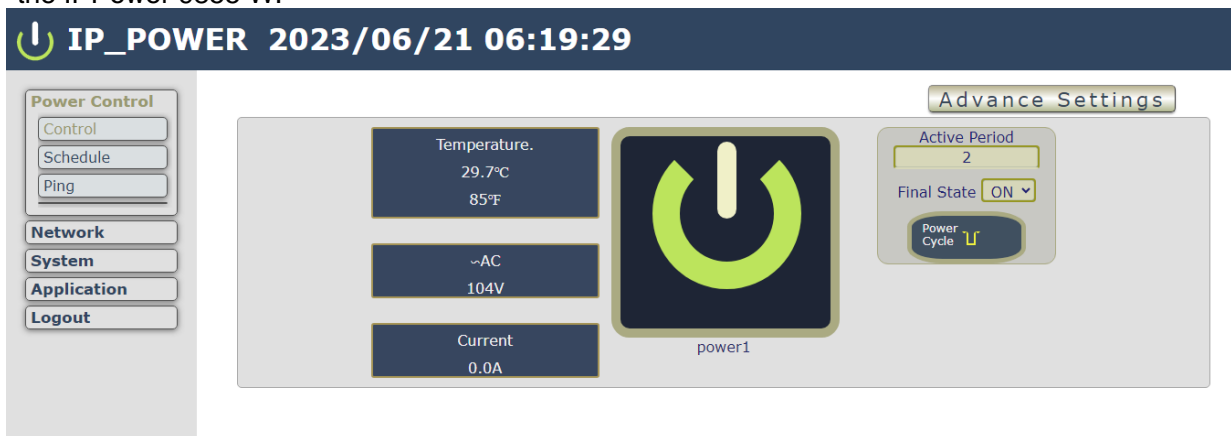
The default Username and Password for the 9855 W

Username : root

Password : 12345678

The Control Console

The right side Menu of the Web Interface for controlling the functionality and setup of the IPPower 9855 W.



The IP Power 9855 W Console consists of six main sections which will be explained in details below.

- **Top Column** : Temperature, Current Amp Usage, ~AC usage & Device name, Time information
- **Power Control** : Control, Schedule, Ping
- **Network** : Interfaces, Wireless, Webport
- **System** : Management, Information, E-mail, System Log, Backup / Flash firmware, Reboot,
- **Application** : IPService, SNMP, Network UPS tools, Watchcat, Wake on Lan
- **Logout**

4.2 Top Column

4.2.1 Device name

This section show the device name. You can change the device name here: Application → IP Service → Device name Change name “ IP POWER 9855 W “ as “Enjoy 9855 W “

IP Service Setting (Search)

Enable

IP Service Server Server1

Device Name: IP_POWER

Country Country

City City

Find IP_POWER device on myipedit.com

Save

CNT(MQTT) Setting (Remote control)

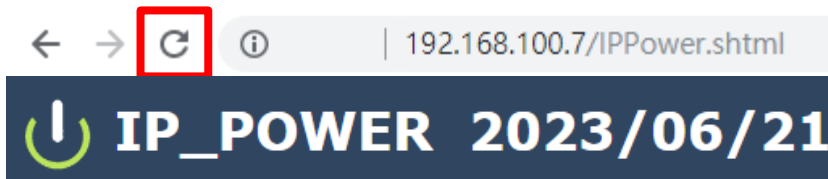
MQTT Service IPPower

Enable

Status

Save

Notice : Please do not use symbol like !@#\$%^&*()_+ as the character of the device name .



After apply the change, please click “ Refresh “ of the webpage to get the display update .

4.2.2 Date and Time

In this section, it shows Time at **Year – Month – Date, Hours : Minutes : Seconds** .



To setup the Time, Please go to “ System → Management → System (Time & Language) → General Settings ”,

In Sync section, user can select the time to sync with local PC browser or with assigned NTP server, please press “ Save & Apply ” to save the new setting.

[System](#) [Password](#) [SSH Access](#) [SSH-Keys](#) [HTTP\(S\) Access](#) [ACL Settings](#)

Time & Language

Here you can configure the basic aspects of your device like its Language or the timezone.

[General Settings](#) [Time Synchronization](#) [Language](#)

Local Time	2023-06-19 10:59:08	Sync with browser	Sync with NTP-Server
	2023-06-19 10:59:01	Set time manual	
Timezone	Asia/Taipei		

[Save & Apply](#) [Save](#) [Reset](#)

1. SYNC:

- (1) With browser: Sync with the browser log into 9855 W.
- (2) With NTP Server: - sync with the assigned sever and can setup the times for sync.
Move to the “ Time Synchronization ”, and click the enable NTP client.

2.Timezone: You can choose UTC or other country/region timezone.

To use the time to sync with NTP server, please setup the NTP server in Time Synchronization

[System](#) [Password](#) [SSH Access](#) [SSH-Keys](#) [HTTP\(S\) Access](#) [ACL Settings](#)

Time & Language

Here you can configure the basic aspects of your device like its Language or the timezone.

[General Settings](#) [Time Synchronization](#) [Language](#)

Enable NTP client	<input checked="" type="checkbox"/>										
Use DHCP advertised servers	<input checked="" type="checkbox"/>										
NTP server candidates	<table><tr><td>0.openwrt.pool.ntp.org</td><td>-</td></tr><tr><td>1.openwrt.pool.ntp.org</td><td>-</td></tr><tr><td>2.openwrt.pool.ntp.org</td><td>-</td></tr><tr><td>3.openwrt.pool.ntp.org</td><td>-</td></tr><tr><td></td><td>+</td></tr></table>	0.openwrt.pool.ntp.org	-	1.openwrt.pool.ntp.org	-	2.openwrt.pool.ntp.org	-	3.openwrt.pool.ntp.org	-		+
0.openwrt.pool.ntp.org	-										
1.openwrt.pool.ntp.org	-										
2.openwrt.pool.ntp.org	-										
3.openwrt.pool.ntp.org	-										
	+										

[Save & Apply](#) [Save](#) [Reset](#)

4.3 Power Control

The IO Control Section allows you to directly / automatically control the outlets of the 9855 W as well as schedule Once, Daily, Weekly, and power cycles.

There are 3 sections: Control, Schedule, Ping



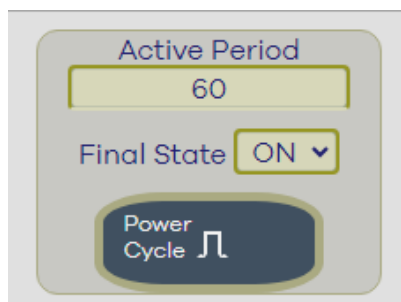
4.3.1 Control

There are 2 setting pages in this Section. One is "Power Control" and another one is "Advance Setup"

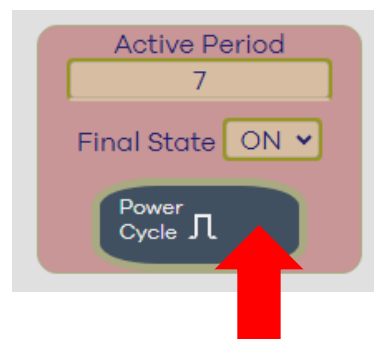
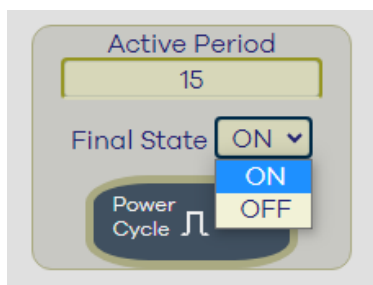
A. Power Control :

User can do the following 3 basic operation in this page :

1. Manual control: each port ON or OFF directly by pressing the power sign.
2. Power Cycle control : Manually Control the relay delay to turn ON / OFF .
The relay cycle time can be set from 1 to 9999 seconds



User can set up the time and the final status in power cycle as ON / OFF.



For example : (sec = seconds)

- Original Outlet as " OFF " , select final status as " ON " & fill 15sec :
After press power cycle button, the outlet will turn OFF for 15 seconds and then turn ON .

OFF (15 sec) → ON

- Original Outlet as " ON " , select final status as " ON " & fill 10sec :
After press power cycle button, the outlet will turn OFF for 10 seconds and then turn ON .

ON --> OFF (10 sec) → ON

- Original Outlet as " OFF " , select final status as " OFF " & fill 8 sec :After
press power cycle button, the outlet will turn ON for 8 seconds and then
turn OFF .

OFF → ON (8 sec) → OFF

- Original Outlet as " ON " , select final status as " OFF " & fill 5 sec :

After press power cycle button, the outlet will be ON for 5 seconds and then turn OFF .

ON (5 sec) →OFF

The following 3 pictures shows that after press the power cycle with 5 seconds setting, the outlet " Power1 " will turn off for 5 seconds , then turn ON later . The power cycle action will execute after press the " Power Cycle " button .



B. Advance Setup :

User can do the following 8 advance operation in this page :

➤ Port Name setting:

User can name each power by click the name above the power button

The number of character is max. 12 characters and Please change the name in English only and do not use symbol like !@#%&^*()*_+

Control

Outlet1	power1
Disable Control Button	<input type="checkbox"/>
Disable Power cycle Button	<input type="checkbox"/>
Email Alerts	<input type="checkbox"/>
Beep Alert	<input type="checkbox"/>
Power Cycle Time	60 Seconds
Current (1-10)Amp	<input type="checkbox"/> 8
Temperature Limit: 0-60°C Low: 0.0 High: 60	None
Default Power Status	LAST

Save

Temperature: 29.6°C
85°F

~AC: 103V

Current: 0.0A

power1

Active Period: 60
Final State: ON

Power Cycle

- **Disable Control Button :**
Stop to control ON/OFF in the webpage manually.
9855 W will follow control by HTTP/CGI command or by Schedule setting.
- **Disable Power cycle Button :**
Stop to “power cycle“ control in the webpage manually . 9855 W will follow control by HTTP/CGI command or by Schedule setting.
- **E-mail Alarm Setting :**

User can enable /disable the e-mail alarm here. Please refer the page 33 to setup the email information in “Application “ → Email .

The e-mail alarm section allows 9855 W to notify user by following situation :

- Receive E-mail with IP information & MAC Address as 9855 W device boot up.
- Receive E-mail as ON/OFF status change in output.

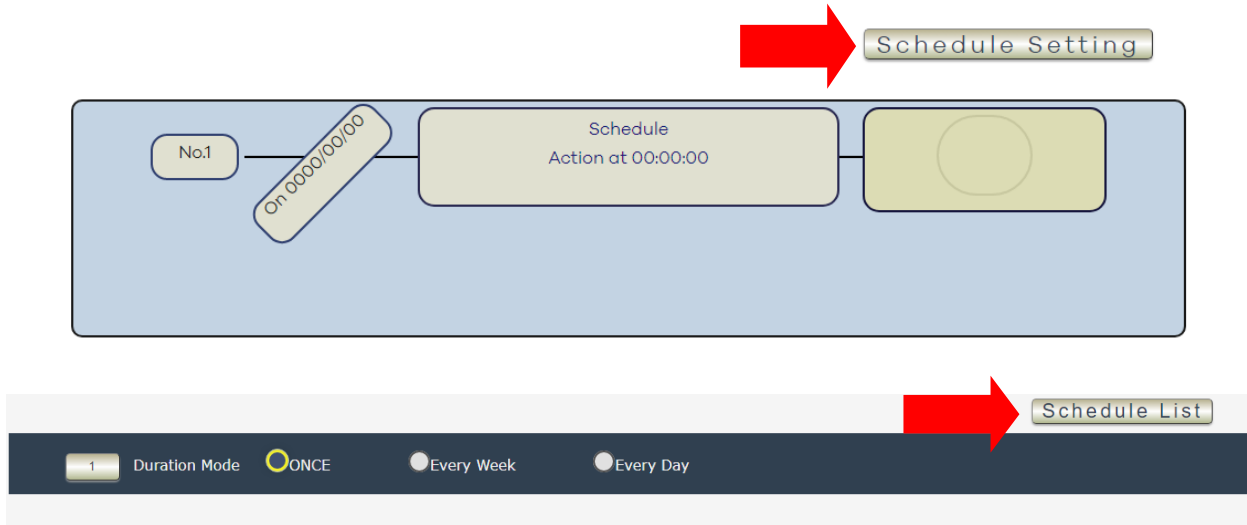
- **Beep Alert :** User can setup the operation beep (short time beep) sound here.
- **Default Power Status:** The control section allow user to set the power status on ON or OFF or LAST when the device power Rebooted. The output will be same status as choose LAST before the device power turn off. To save the setting here, please click “Apply “ button .

Note : Please change the name in English only and do not use symbol like !@#%&^*()*_+

4.3.2 Schedule

In this section, user can see the setting schedule list first up to 30 rules. To setup each schedule, please press “ Schedule Setting “ , then user can get the “ Schedule List “ page as following :

Please click the button to switch between “ Schedule Setting “ & “ Schedule list “ :



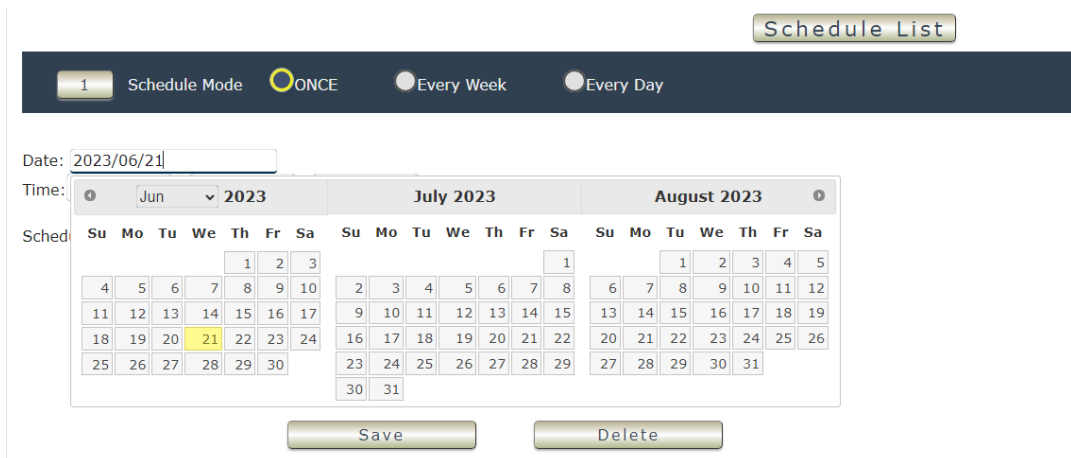
The schedule allows you to control the power outlet turn ON, OFF, Cycle or Reboot at the assigned time user arrange in schedule

- Adding a Scheduled Event

1. Select the Action Duration :

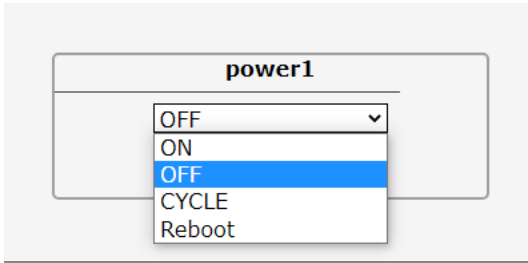
There are 3 setting – Once, Every Week, Every Day

2. Select a Specific Date Range where the device will repeat the desired actions during the time specified.

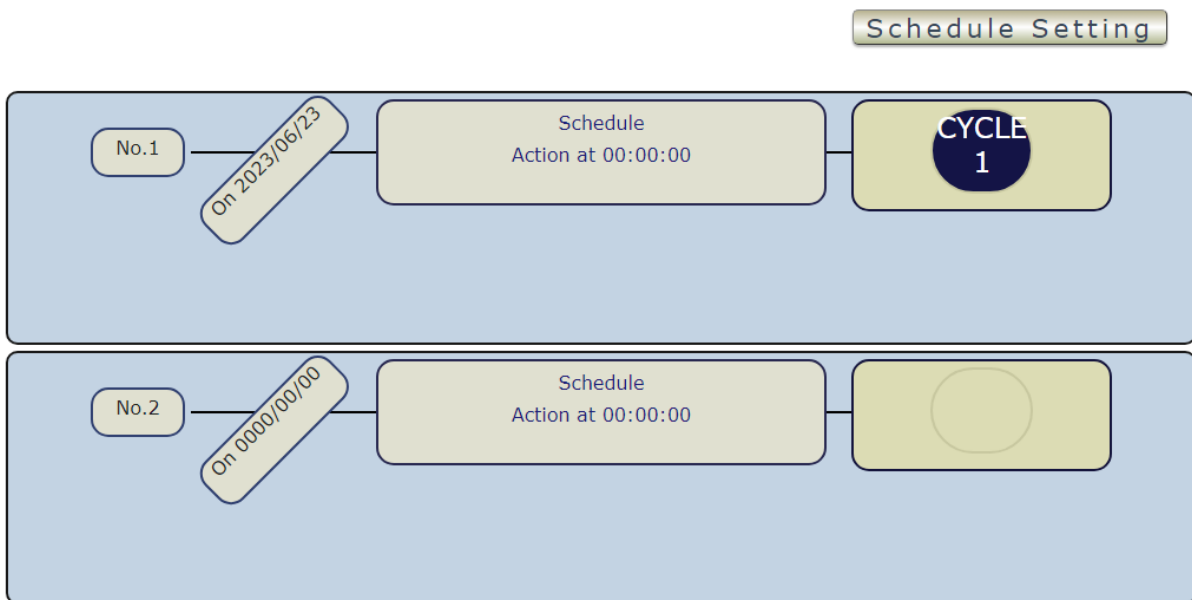


3. Select the Time Period.

4. Choose the Action : Enable power # by clicking in the small square to mark “ v “ , and select one from the power action of OFF/ON/cycle/reboot as you need.



Once the scheduler has been Set Up, click the “ Save ” button and you will see your setting located on the bottom of the Action section.



- **Apply / Edit a Schedule Event :**



Please select the Rule you want to edit in Scheduler Table. Change the setting like Duration , Date , Time and Action. Then Press “ Save ” button to confirm the setting and you will see the page refresh and new setting display in Scheduler list

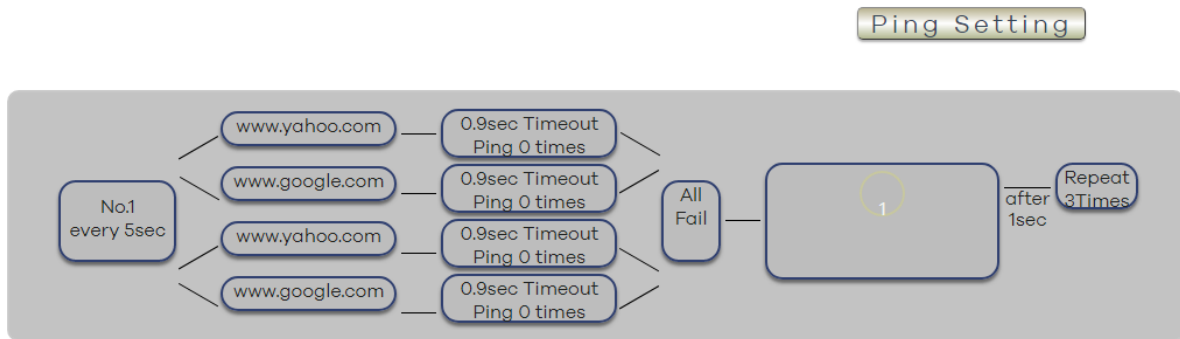
- **Delete** - Click “ Delete “ button to remove a rule from the list .

4.3.3 Ping

The Ping function allows the device to Ping an IP Address automatically to act as a watchdog to make sure the device getting Ping and working properly. Please Click the button to switch between “ Ping Setting “ & “ Ping List ”. User can hide the setting section by press “ Ping List ”.

There are 1 rules for Ping .

- **Ping List Page :**



- **Ping Setting Page :**

Ping List

Global Ping Base Setting

Ping Interval:	5 Sec.	Response Time Out:	900 ms.
Ping After Action Delay	1 Sec.	Action Max repeat Times:	3 (0=non stop)

Apply

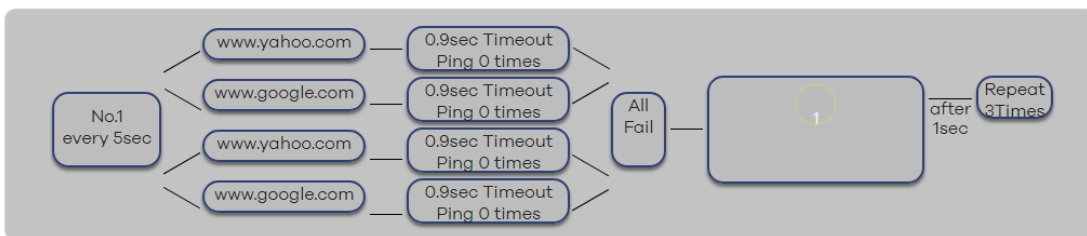
Logic Mode: Single OR And

IP & Host Name	Failed times	Repeat
www.yahoo.com Check	00	Stop
www.google.com Check		
www.yahoo.com Check		
www.google.com Check		

Rule No1

Action

Save **Delete**



There are 3 sections of the setting area :

1. Setting Rule Numbers:

User can click to select different rules numbers at the right side button " Rule No: X " as following pictures .

Ping List

Global Ping Base Setting

Ping Interval:	5 Sec.	Response Time Out:	900 ms.
Ping After Action Delay	1 Sec.	Action Max repeat Times:	3 (0=non stop)

Apply

Logic Mode: Single OR And

IP & Host Name	Failed times	Repeat
www.yahoo.com Check	00	Stop
www.google.com Check		
www.yahoo.com Check		
www.google.com Check		

Action

Rule No1

Save **Delete**

2. Ping Set:

Ping List

Global Ping Base Setting

Ping Interval:	5 Sec.	Response Time Out:	900 ms.
Ping After Action Delay	1 Sec.	Action Max repeat Times:	3 (0=non stop)

Apply

- Ping Interval : The number of seconds (Sec., 1~9999) between each ping .
- Response Time out : The number of milliseconds (ms. ,1~9999) of the device will wait for a response from the Pinged device if no ping is detected within this time it will be considered a Ping failure.
- Ping After Action Delay : After ping finished , do the action after setting seconds (Sec.)
- Action Max repeat Times: Setup the times of Action after Ping Failure.
Set 0 means action non stop - Keep action & no limit times.

As setting finished, please click " Apply " to save the setting in this area , the webpage will refresh and user can see the final setting result. Ten different set up rules for different port.

3. Ping logic :

The setting here is for each rule.

IP & Host Name	Failed times	Repeat
www.yahoo.com	00	Stop
www.google.com		
www.yahoo.com		
www.google.com		

Action

Save Delete

➤ Ping logic:

User can select the action activate by one / two IP Host failure or either one fail

- Single : Execute Action by one IP Host failure .
- OR : Execute Action by either one IP Host failure as setting 4 pcs IP Host
- And : Execute Action by both IP Host failure as setting 4 pcs IP Host

Single : 9855 W will Ping one IP address. As the IP fail times reach to the setting times. Action (ON/OFF/RESET) will be activated.

OR : 9855 W will Ping 4 IP address. Either one IP fail times reach to the setting times. Action (ON/OFF/RESET) will be activated.

And : 9855 W will Ping 4 IP address. Both IP fail reach to the setting times. Action (ON/OFF/RESET) will be activated.

IP & Host Name	Failed times	Repeat
www.yahoo.com	00	Stop
www.google.com		
www.yahoo.com		
www.google.com		

Action

Save Delete

- IP & Host Name : Input the IP Address (ex: 122.116.123.138) or Host - web address (ex: www.google.com) user would like to Ping. User can use the “ ping test ” bottom to check the address valid or not

➤ Failed times : Setup the times as get ping failure for 9855 W to execute the setupON/OFF / Reset action of setting. ping one time and (range 00~99)

➤ Repeat : After the ON/OFF/Reset action , user can setup the Ping action to keep ping (Continue) or to Stop Ping (Stop) .

➤ Enable Ping function : In the selected Rules number , please select the outlet number power to activate as ping fails and then press “ Save “ button to confirm the setting .

Ping List

Global Ping Base Setting

Ping Interval:	5 Sec.	Response Time Out:	900 ms.
Ping After Action Delay	1 Sec.	Action Max repeat Times:	3 (0=non stop)

Apply

Logic Mode: Single OR And

IP & Host Name	Failed times	Repeat
www.yahoo.com <input type="button" value="Check"/>	00	Stop
www.google.com <input type="button" value="Check"/>		
www.yahoo.com <input type="button" value="Check"/>		
www.google.com <input type="button" value="Check"/>		

Action

Save Delete

Rule No1

➤ Action :

When the number of Ping Failures times have been reached. The device can be set to “ ON , OFF or Reset ” function.

Reset: Can set up the time gap from OFF to ON. The “ Sec “ section is for action as Reset only.

- ON
- OFF
- Cycle: It means outlets turn OFF to ON

The setting times range is 1 to 999 sec.

Select the number of Ping Failures that user prefer to do before the action is activated.

EX: Result of setting

4.3.4 QR code

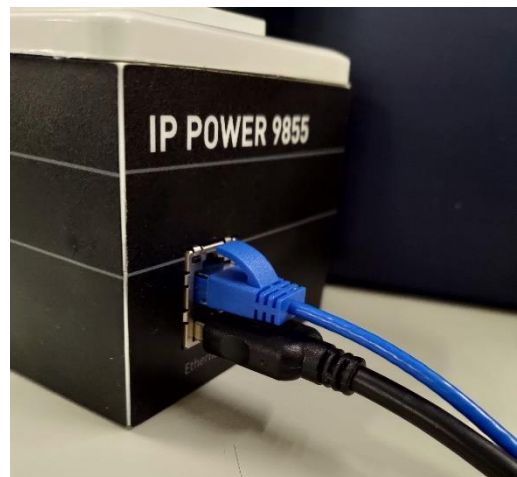
The QR code function operates by using the QR code icon within the device to perform I/O actions, linking to execute actions on scanner 9855 through scanning.



What you need to prepare?

1. A network cable, recommend to use the “thin” cable
2. A QR Barcode Scanner for PC (USB)

Connect to your IP POWER 9855, and plug your QR Barcode Scanner as the red arrow shown.



Except QR code, general code scanning can also be applied to the 9855, but you must first input the settings on the code scanning interface in order to control IO.

Every time you scan the QR code or other code, the “Counter” will count how many you scan it, you can reset to zero by click the apply.

For example:

This is the box with the code and barcode.



When you scan the barcode in the box, you can see the code in the webpage, it shows the number as same as the scanner bar shown. But it won't execute the device operating, you must input the code from the 9855's manual provide, you can see one of the code in the on/off picture below.

ON	Counter	OFF
	1	

System Information	
Connect	connect
<input type="button" value="Apply"/>	

14810

Scanning on and off QR code will trigger the IO control, and will show their command code below.

I/O control On code:

ON	Counter	OFF
	2	

System Information	
Connect	connect
<input type="button" value="Apply"/>	


```
cmd=setpower+p61=1
```

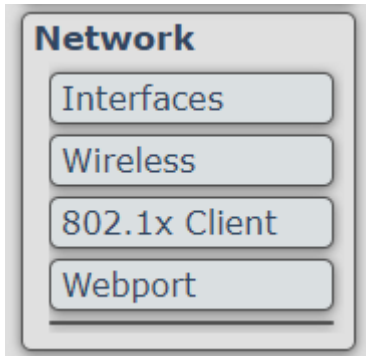
I/O control Off code:

ON	Counter	OFF
	3	

System Information	
Connect	connect
<input type="button" value="Apply"/>	


```
cmd=setpower+p61=0
```


4.4 Network



LAN Network Settings



The network status is connected by ether cable with RJ45 connector. There are **3** ways to connect the network : By DHCP Client, DHCPv6 Client and Static address.

Protocol	DHCP client
Device	DHCP client
Bring up on boot	<input type="checkbox"/>

4.4.1 Interfaces

The interface shows the basic information of device's network, to change the setting, click the "edit" bottom.

interface

lan  br-lan	Protocol: DHCP client Uptime: 1d 20h 52m 43s MAC: 00:76:56:00:43:21 RX: 147.97 MB (943404 Pkts.) TX: 13.67 MB (83652 Pkts.) IPv4: 10.33.122.43/24	Edit
lan6  br-lan	Protocol: DHCPv6 client Uptime: 1d 20h 54m 5s MAC: 00:76:56:00:43:21 RX: 147.97 MB (943404 Pkts.) TX: 13.67 MB (83652 Pkts.) IPv6: 2001:b011:3801:3388:276:56ff:fe00:4321/64	Edit

[Save & Apply](#) [Save](#) [Reset](#)

A. Static Mode (fixed IP)

Setup IP address, DNS and Port manually. This allows the 9855 W to obtain an IP Address automatically from user`s server connected to Internet. Recommended for users who need to control through Internet.

Please do fill up the correct gateway / port for login from Internet .

Please do fill up the correct DNS server for sending / receiving email (alarm) .

Protocol: Static address

Interfaces >> lan

General Settings

Status

Device: br-lan
Uptime: 1d 22h 28m 29s
MAC: 00:76:56:00:43:21
RX: 154.26 MB (985318 Pkts.)
TX: 16.25 MB (90740 Pkts.)
IPv4: 10.33.122.43/24

Protocol: Static address

Device: br-lan

Bring up on boot:

IPv4 address:

IPv4 netmask: unspecified

IPv4 gateway: 10.33.122.1 (lan)

IPv4 broadcast:

IPv6 address: Add IPv6 address...

IPv6 gateway:

IPv6 routed prefix:

Public prefix routed to this device for distribution to clients.

Use custom DNS servers:

Dismiss Save

B. DHCP Mode

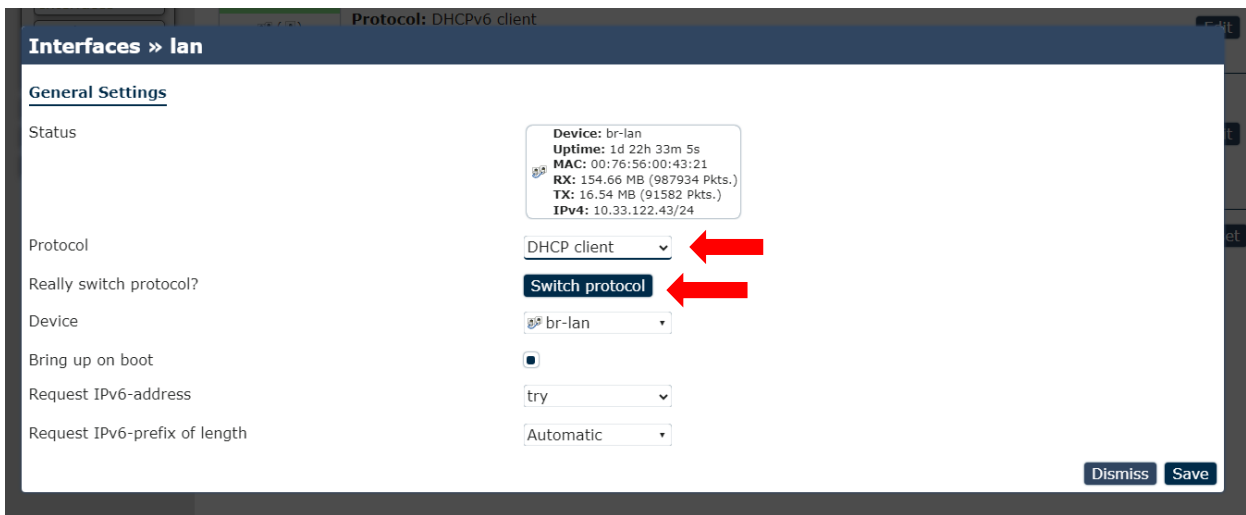
Obtain IP address via DHCP mode. setup the DNS and port

This allows the 9855 W to obtain an IP Address automatically from user`s server connected to Internet. Recommended for non- advance users.

User can only revise the Host Name under DHCP mode. This is also the default setting for fast LAN connection solution.

As the IP from DHCP Service of user`s router will be changed by router. 9855 W will remember last IP of 9855 W assigned by user`s router in “Last DHCP state” for information

When you switch the protocol to “DHCP Client”, it will appears “ Really switch protocol? ” line, remember to click it.



After click the “Switch protocol”, setting screen will show the new settings, remember to click save after you complete your settings.

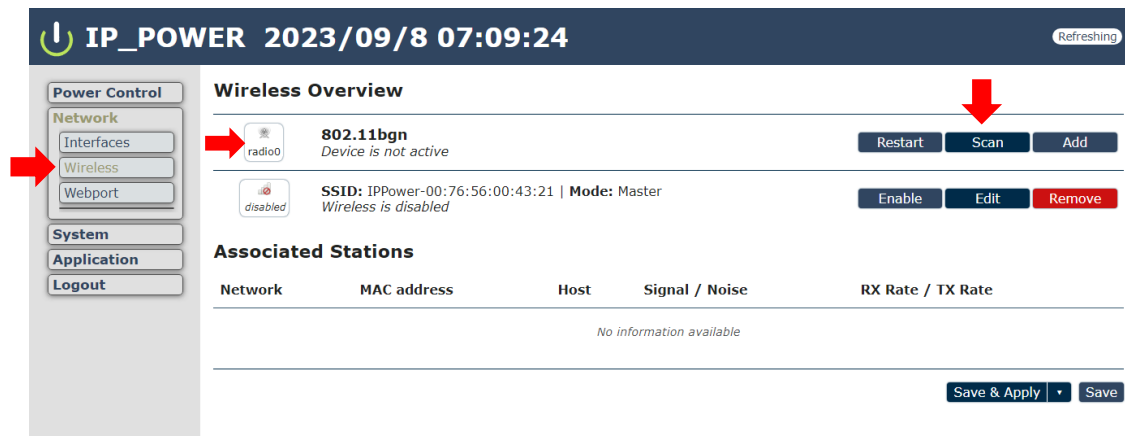


4.4.2 Wireless

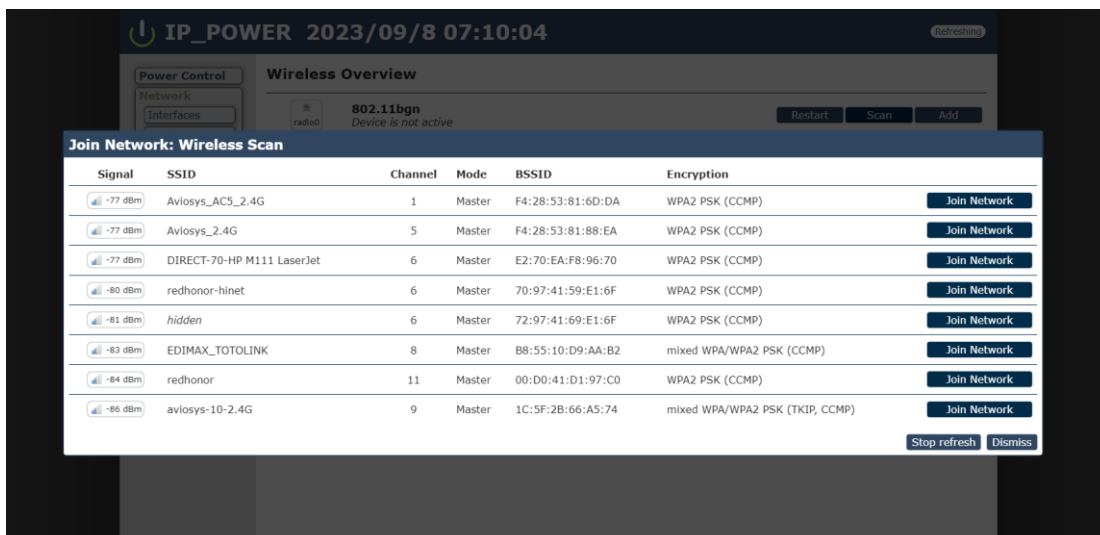
How to setting wireless:

- *Notice:** (1) During the wireless connection setup, please do not unplug the Ethernet cable from your 9855. The setup must be done with the Ethernet connection.
- (2) Whether you set up the wireless connection or not, if you activate the “factory reset,” the device will return to the default settings, including your **wireless settings** and your **network segment(SSID)**. You will need to reconnect your SSID again after the factory reset.

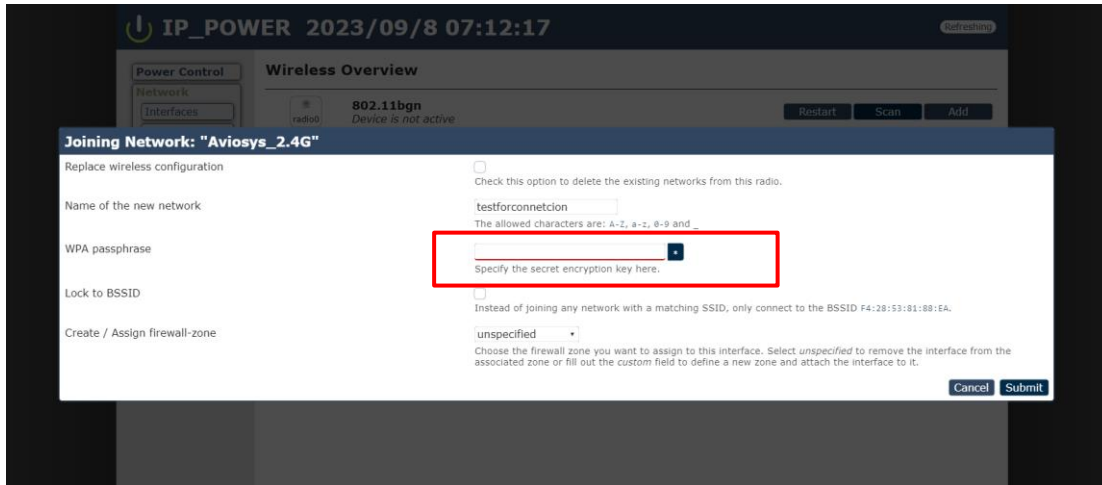
1. Click the “ Network ” section, you can see the “wireless” part appears after update the firmware, click the wireless to start the setting and connection.
Follow the red arrow in the “radio0 icon”, click the scan to search the connection.



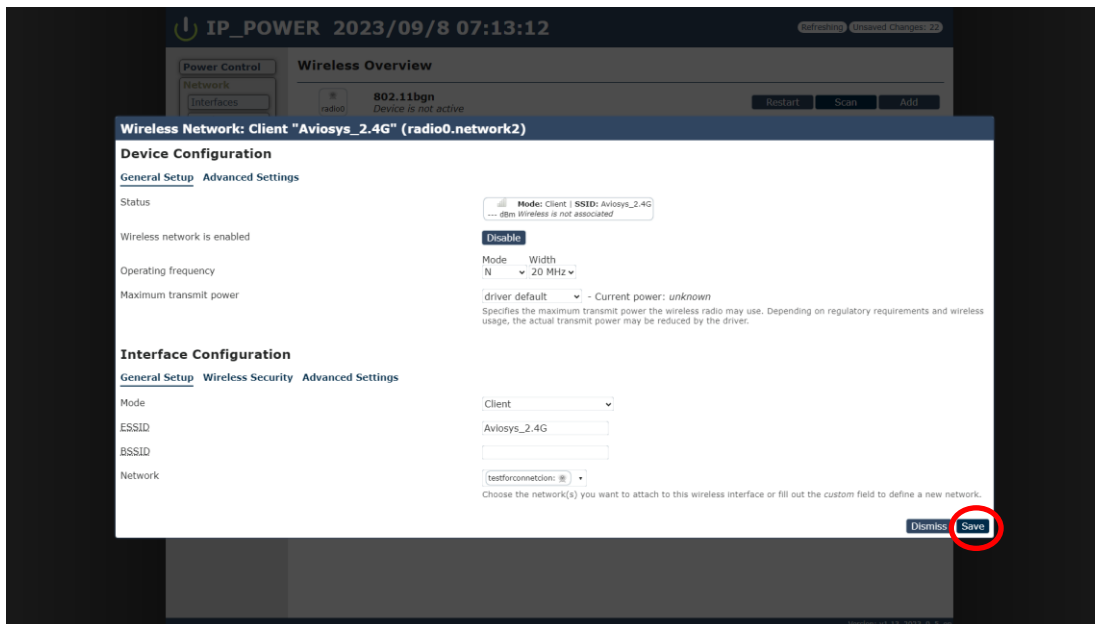
- 1-1 After you click the scan, choose the SSID you want to connect.
We take the example of “ aviosys_2.4G ”.



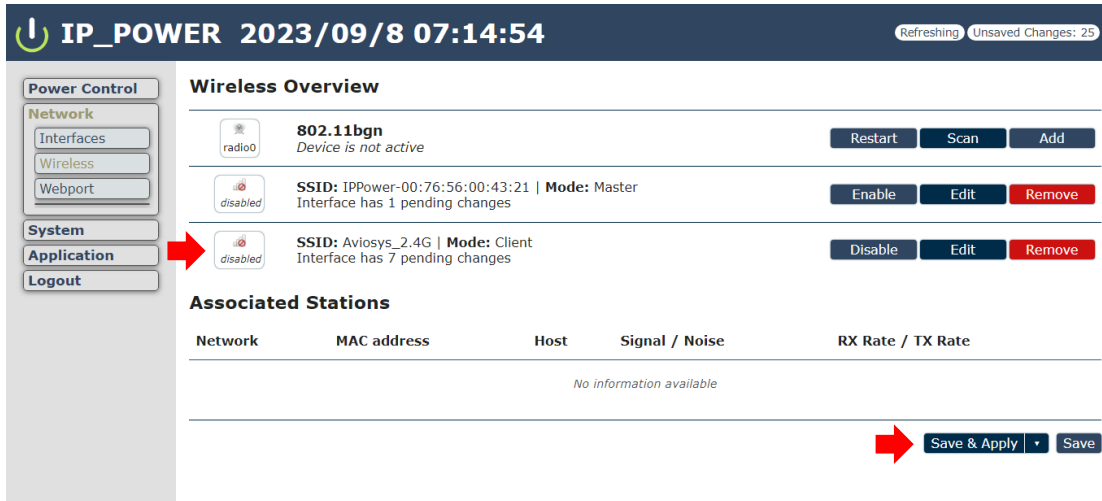
1-2 Click the “WPA passphrase” to enter SSID’s password, then click submit.



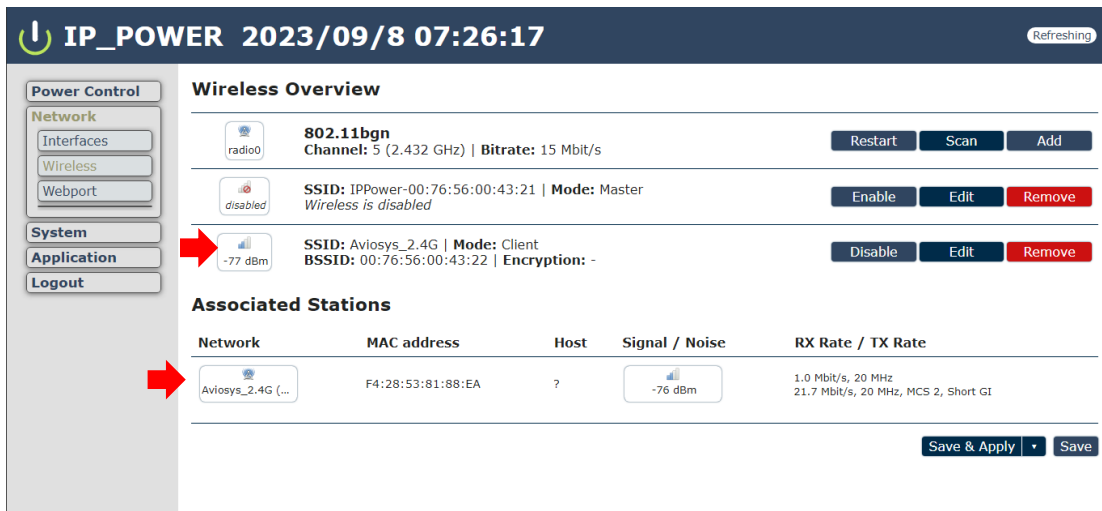
1-3 After you click submit, click the save bottom to save the settings.



- When you back to the wireless overview, you can see your network has appeared, but the setting is not over, you can see the icon show “disabled”, you have to click the “ Save & Apply” to finish the wireless connection setting. **This step is necessary.**



- After your wireless is applied, your icon will show its signal, and the Associated Stations will display the wireless network you are connected to. This indicates that your wireless is activated.



- Despite you successfully connect the wireless, but the device current connection is through the ethernet connection. After setting up wireless by using a ethernet connection with the 9855, you need to remove the ethernet cable connection and restart the power. The wireless function of the 9855 will enable(gateway setting).

3-1 After the power restart of the 9855 is completed, you can connect 9855 through wireless.

When you finished all the steps, and test 9855 can be use under wireless connection, the wireless connection setting is complete!

4.4.3 802.1X Client

To configure IEEE 802.1X wired authentication, you may need to edit your interface protocol as DHCP client here.

802.1x Client

Configure IEEE 802.1x wired authentication, you may need to edit your interface protocol as *DHCP* client here

Enable	<input type="checkbox"/>
Username	<input type="text"/>
Password	<input type="text"/>
Interfaces	<input type="text" value="br-lan"/>
EAP	<input type="text" value="MD5"/>

Enable: If you want to enable it, click the icon, if don't, do not click it.

Username: Edit your username

Password: Edit your password

Interfaces: currently only provides "br-lan"

EAP: MD5, PEAP, MSCHPV2

After you finish the setting, remember to click the "save" to save it.

4.4.4 Webport

A lightweight single-threaded HTTP(S) server

General Settings:

Port

port setting

MAIN

General Settings

HTTP listeners (address:port)

<input type="text" value="0.0.0.0:80"/>	-
<input type="text" value="[:]:80"/>	-
<input type="text"/>	+

Bind to specific interface:port (by specifying interface address)

HTTPS listener (address:port)

<input type="text" value="0.0.0.0:443"/>	-
<input type="text" value="[:]:443"/>	-
<input type="text"/>	+

Bind to specific interface:port (by specifying interface address)

Redirect all HTTP to HTTPS

HTTPS Certificate (DER or PEM format)

HTTPS Private Key (DER or PEM format)

Remove old certificate and key

generate a new self-signed certificate using the configuration shown below.

Remove configuration for certificate and key

This permanently deletes the cert, key, and configuration to use same.

Self-signed Certificate Parameters

Valid for # of Days

Length of key in bits

Server Hostname

a.k.a CommonName

Organization

If empty, a random/unique value is used in cert generation

Location

State

Country

For example:

Port

port setting

MAIN

General Settings

HTTP listeners (address:port)

0.0.0.0:80	-	(1)
:::80	-	(2)
	+	(3)

Bind to specific interface:port (by specifying interface address)

HTTPS listener (address:port)

0.0.0.0:443	-	(1)
:::443	-	(2)
	+	(3)

Bind to specific interface:port (by specifying interface address)

Redirect all HTTP to HTTPS

Device's IP: 0.0.0.0, (ex: 192.168.1.xx or 10.33.122.xx)

port: 80(HTTP). 443(HTTPS) (the ports number depends on the router setting)

1. HTTP listeners (address: port): Bind to specific interface:port by specifying interface address.

(1) Port section: "0.0.0.0" is your IP device, 80 is the port you type

If fill 0.0.0.0 here, 9855 W recognize the IP as the device IP address

For example: if the IP address of the 9855 W is 192.168.1.168:80

User can fill: 0.0.0.0:80 which also mean 192.168.1.168:80

User can also fill 192.168.1.168:80 here.

(2) This section shows the format of IPV6, as the (1) shows how IP address works, user have to follow the format to type new IP address like: :::80 or :::443 ...etc

(3) Type new port : Add new port for IPV4 or IPV6 section, then click the dark blue "+" bottom, and click save & apply, settings complete.

2. HTTPS listeners (address: port): Bind to specific interface:port(by specifying interface address. Same procedure as "1. HTTP listeners"

3. Redirect all HTTP to HTTPS: User can enable this section and which will Direct HTTPS only, and disable HTTP.

4. HTTPS Certificate (DER or PEM format): Upload certificate Der or PEM file.

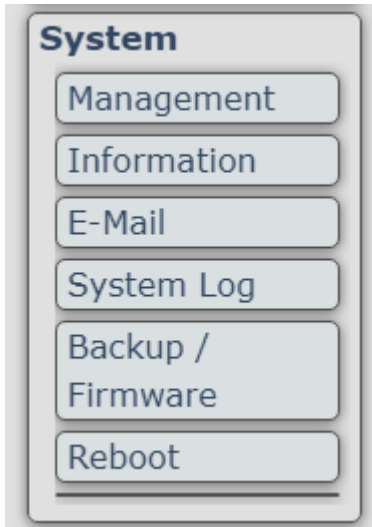
5. HTTPS Private Key (DER or PEM format): Upload Private key DER or PEM file.

6. Remove old certificate and key: Generate a new self-signed certificate using the configuration shown below.

7. Remove configuration for certificate and key: This permanently deletes the cert, key, and

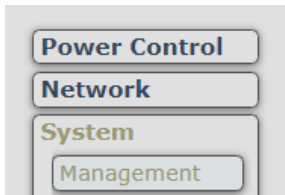
configuration to use same.

4.5 System



4.5.1 Management

In this section there are 6 settings: System, Password, SSH Access, SSH-Keys, HTTP(S) Access, ACL settings



[System](#) [Password](#) [SSH Access](#) [SSH-Keys](#) [HTTP\(S\) Access](#) [ACL Settings](#)

Time & Language

Here you can configure the basic aspects of your device like its Language or the timezone.

System:

[System](#) [Password](#) [SSH Access](#) [SSH-Keys](#) [HTTP\(S\) Access](#) [ACL Settings](#)

Time & Language

Here you can configure the basic aspects of your device like its Language or the timezone.

[General Settings](#) [Time Synchronization](#) [Language](#)

Local Time	<input type="text" value="2023-06-19 10:59:08"/>	<input type="button" value="Sync with browser"/>	<input type="button" value="Sync with NTP-Server"/>
	<input type="text" value="2023-06-19 10:59:01"/>	<input type="button" value="Set time manual"/>	
Timezone	<input type="text" value="Asia/Taipei"/>		

(1) General setting:

1-1 Local Time: Sync the local time through browser, NTP-server or manual setting.

1-2 Timezone: Change your timezone setting.

(2) Time Synchronization:

Enable NTP client and DHCP function, and set your NTP server candidate.

[System](#) [Password](#) [SSH Access](#) [SSH-Keys](#) [HTTP\(S\) Access](#) [ACL Settings](#)

Time & Language

Here you can configure the basic aspects of your device like its Language or the timezone.

[General Settings](#) [Time Synchronization](#) [Language](#)

Enable NTP client

Use DHCP advertised servers

NTP server candidates

0.openwrt.pool.ntp.org	-
1.openwrt.pool.ntp.org	-
2.openwrt.pool.ntp.org	-
3.openwrt.pool.ntp.org	-
	+

Save & Apply Save Reset

(3) Language

There are 3 language option of 9855 W .The default langrage is English.
The other two languages are “Chinese(Simplified)” and “ Taiwanese(Traditional Chinese)” .

[System](#) [Password](#) [SSH Access](#) [SSH-Keys](#) [HTTP\(S\) Access](#) [ACL Settings](#)

Time & Language

Here you can configure the basic aspects of your device like its Language or the timezone.

[General Settings](#) [Time Synchronization](#) [Language](#)

Language

English

auto

English

简体中文 (Chinese Simplified)

繁體中文 (Chinese Traditional)

Save & Apply Save Reset

System Password:

Change the administrator password for accessing the device.

[System](#) [Password](#) [SSH Access](#) [SSH-Keys](#) [HTTP\(S\) Access](#) [ACL Settings](#)

Password

Changes the administrator password for accessing the device

Password	<input type="password"/>	<input type="button" value="*"/>
Confirmation	<input type="password"/>	<input type="button" value="*"/>

SSH Access:

Dropbear offers SSH network shell access and an integrated SCP server.

[System](#) [Password](#) [SSH Access](#) [SSH-Keys](#) [HTTP\(S\) Access](#) [ACL Settings](#)

SSH Access

Dropbear offers [SSH](#) network shell access and an integrated [SCP](#) server

Dropbear Instance

Interface	<input type="text" value="unspecified"/>	<input type="button" value="Delete"/>
	<small>Listen only on the given interface or, if unspecified, on all</small>	
Port	<input type="text" value="22"/>	
Password authentication	<input checked="" type="checkbox"/>	<small>Allow SSH password authentication</small>
Allow root logins with password	<input checked="" type="checkbox"/>	<small>Allow the <i>root</i> user to login with password</small>
Gateway Ports	<input type="checkbox"/>	<small>Allow remote hosts to connect to local SSH forwarded ports</small>

SSH-Keys:

Public keys allow for the passwordless SSH logins with a higher security compared to use of plain passwords. In order to upload a new key to the device, paste an OpenSSH compatible public key line or drag a .pub file into the input field.

[System](#) [Password](#) [SSH Access](#) [SSH-Keys](#) [HTTP\(S\) Access](#) [ACL Settings](#)

SSH-Keys

Public keys allow for the passwordless SSH logins with a higher security compared to the use of plain passwords. In order to upload a new key to the device, paste an OpenSSH compatible public key line or drag a .pub file into the input field.

No public keys present yet.

[Add key](#)

HTTP(S) Access:

uHTTPd offers HTTP or HTTPS network access

[System](#) [Password](#) [SSH Access](#) [SSH-Keys](#) [HTTP\(S\) Access](#) [ACL Settings](#)

HTTP(S) Access

uHTTPd offers [HTTP](#) or [HTTPS](#) network access.

Settings

Redirect to HTTPS

Enable automatic redirection of [HTTP](#) requests to [HTTPS](#) port.

[Save & Apply](#) [Save](#) [Reset](#)

ACL Settings:

Manage and create the list of account for different settings and authorized purpose.

[System](#) [Password](#) [SSH Access](#) [SSH-Keys](#) [HTTP\(S\) Access](#) [ACL Settings](#)

LuCI Logins

Login name	Session timeout	Read access	Write access	
root	300s	full	full	Edit Delete
guest	300s	full	denied	Edit Delete
admin	300s	full	full	Edit Delete

[Add](#)

[Save & Apply](#) [Save](#) [Reset](#)

For example:

1. root: Can normally operate all the function
2. guest: The authorized only for read access, can't control the device.
3. admin: For the user who used to operate old CGI http command from other IP Power devices.
The user still can use the other IP Power http command through "admin" user.

4.5.2 Information

User can get the system information here.

Status

System

Hostname	IP_POWER
Firmware Version	v1.10_2023_6_26_op
Hardware Version	IP9855V1000
UBoot Version	4.4.1.8
Web Port	0.0.0.0:80,[::]:80
Local Time	2023-06-27 07:04:28
Uptime	4h 57m 8s

Network

IPv4 Upstream

Protocol: DHCP client
Address: 10.33.122.2/24
Gateway: 10.33.122.1
DNS 1: 8.8.8.8
DNS 2: 1.1.1.1
DNS 3: 168.95.192.1
DNS 4: 168.95.1.1
Expires: 19h 3m 41s
Connected: 4h 56m 19s

Device: Bridge: "br-lan"
MAC address: 00:76:56:00:01:08

IPv4 Upstream

Protocol: DHCP client
Address: 10.33.122.5/24
Gateway: 10.33.122.1
DNS 1: 168.95.192.1
DNS 2: 168.95.1.1
Expires: 23h 33m 10s
Connected: 0h 26m 50s

Device: Wireless Network: Client "aviosys-10-2.4G"
MAC address: 00:76:56:00:01:09

IPv6 Upstream

Protocol: DHCPv6 client
Address: 2001:b011:3801:3388:276:56ff:fe00:108/64
Gateway: fe80::1e5f:2bff:fe66:a574
DNS 1: 2001:b000:168::2
DNS 2: 2001:b000:168::1
Connected: 4h 56m 15s

Device: Bridge: "br-lan"
MAC address: 00:76:56:00:01:08

Active Connections

137 / 8192 (1%)

4.5.3 Email

e-Mail

The SMTP function offers mail agent to send event notification to mail receiver

SMTP config

From	<input type="text" value="aviosys1@gmail.com"/>
Server	<input type="text" value="smtp.gmail.com"/>
To:	<input type="text" value="aviosys101@gmail.com"/>
Port	<input type="text" value="587"/>
tls	<input type="checkbox"/>
Account	<input type="text" value="aviosys1"/>
Password	<input type="password" value="....."/>

➤ Email Setting :

User can get e-mail advice as one of the following situation happen:

- Receive E-mail with IP information & MAC Address as 9855 W device boot up.
- Receive E-mail as ON/OFF status change in each output.

Notice : To send out the e-mail successfully , please double check the setting of user DNS . (Network → Interface → DNS setting

The 9855 W allows user to send from public e-mail account , such as@gmail or @hotmail or @yahoo.com

- **From :** Mail sender address to send the E-Mail out. Ex.: 9855 W@gmail.com
- **Server (SMTP):** This is the mail server of sender

If user select @gmail or @hotmail account as SMTP Server , 9855 W will fill the SSL & Port automatically

- **To :** Mail receiver address to get the E-Mail in. Ex.: 9223@hotmail.com
- **Server :** Please refer to P.37 Server(SMTP)
- **Port :** This is the port of SMTP Server. Most common port to send out e-mail is port 25
- **TLS :** It depends on the inquire of the email server to enable or disable this inquire .As use Gmail account , please enable this function.
- **Account :** Login for the e-mail address . Ex: 9855 W@gmail.com
- **Password:** Password for the e-mail address. EX : 12345678
- **Verify:** A send e-mail test to make sure the e-mail works.

➤ **Save:** To store the setting in this section.

For example :

Get Email alarm as outlet changed :

User can enable the **Email Alerts** in the advance setting section :

Power Control → Control → Advanced setting

Control

Outlet1	<input type="text" value="power1"/>
Disable Control Button	<input type="checkbox"/>
Disable Power cycle Button	<input type="checkbox"/>
Email Alerts	<input type="checkbox"/>
Beep Alert	<input type="checkbox"/>
Power Cycle Time	<input type="text" value="60"/> Seconds
Current (1-10)Amp	<input type="text" value="8"/>
Temperature Limit:0-60°C Low: <input type="text" value="0.0"/> High: <input type="text" value="60"/>	<input type="text" value="None"/>
Default Power Status	<input type="text" value="LAST"/>

Save

4.5.4 System Log

In this section, user can get the 9855 W system operation information and send the information to assign Server IP address (not support name) . **The system information will be deleted after 9855 W device power reboot.**

Setup:

Setup the IP & port to transfer the log list to external server.

System log

Setup Log

External system log server	<input type="text" value="0.0.0.0"/>
External system log server port	<input type="text" value="514"/>
External system log server protocol	<input type="text" value="UDP"/>
Log output level	<input type="text" value="Debug"/>
Cron Log Level	<input type="text" value="Debug"/>

Apply

1. **External system log server:** Set the IP device that transfer the log list to another server.
2. **External system log sever port:** Set the port of the external server.
3. **External system log server protocol :** select UDP or TCP mode
4. **Log output level :** select level – Debug , Info , Notice , Warning , Error , Critical , Alert & Emergency
5. **Corn log lever :** select Normal or warning

Please click “ Apply ” after you change the settings.

System Log:

Setup:

System log

Setup Log

External system log server	<input type="text" value="0.0.0.0"/>
External system log server port	<input type="text" value="514"/>
External system log server protocol	<input type="text" value="UDP"/>
Log output level	<input type="text" value="Debug"/>
Cron Log Level	<input type="text" value="Debug"/>

Apply

Log:

System log

Setup Log

```
daemon.err ALL
2023-06-21T01:05:28, : 45347.055285 Poll UPS [myups@localhost] failed - Driver not connected
2023-06-21T01:05:33, : 45352.056565 Poll UPS [myups@localhost] failed - Driver not connected
2023-06-21T01:05:38, : 45357.057845 Poll UPS [myups@localhost] failed - Driver not connected
2023-06-21T01:05:43, : 45362.059265 Poll UPS [myups@localhost] failed - Driver not connected
2023-06-21T01:05:48, : 45367.060550 Poll UPS [myups@localhost] failed - Driver not connected
2023-06-21T01:05:53, : 45372.061914 Poll UPS [myups@localhost] failed - Driver not connected
2023-06-21T01:05:58, : 45377.063187 Poll UPS [myups@localhost] failed - Driver not connected
2023-06-21T01:06:03, : 45382.064465 Poll UPS [myups@localhost] failed - Driver not connected
2023-06-21T01:06:08, : 45387.065743 Poll UPS [myups@localhost] failed - Driver not connected
2023-06-21T01:06:13, : 45392.067024 Poll UPS [myups@localhost] failed - Driver not connected
2023-06-21T01:06:18, : 45397.068315 Poll UPS [myups@localhost] failed - Driver not connected
2023-06-21T01:06:23, : 45402.069653 Poll UPS [myups@localhost] failed - Driver not connected
2023-06-21T01:06:28, : 45407.070917 Poll UPS [myups@localhost] failed - Driver not connected
2023-06-21T01:06:28, : 45407.071018 UPS myups@localhost is unavailable
2023-06-21T01:06:28, : > libmsock: using getaddrinfo
2023-06-21T01:06:28, : > AF_INET6
2023-06-21T01:06:28, : IPv6 address: 2404:6800:4008:c03::6c
2023-06-21T01:06:28, : > EINPROGRESS=150,EWOULDBLOCK=11
2023-06-21T01:06:28, : > connect(): socket=3,rc=-1, errno=150
2023-06-21T01:06:28, : > Try socket 3
2023-06-21T01:06:28, : > Setting read timeout to: 5 seconds
2023-06-21T01:06:29, : > Setting read timeout to: 5 seconds
2023-06-21T01:06:29, : > Setting read timeout to: 5 seconds
2023-06-21T01:06:29, : > Setting read timeout to: 5 seconds
2023-06-21T01:06:29, : > Setting read timeout to: 5 seconds
2023-06-21T01:06:29, : > Setting read timeout to: 5 seconds
```

4.5.5 Backup / Flash firmware

Flash Operation:

Please only use the file supply from Aviosys distributor or Aviosys.

There are three sections: Backup, Restore and Upgrade Firmware

The firmware update function only support in LAN connection.

Before update, please DO READ THE HI-LITE MESSAGE BLOW:

Backup: To download a tar archive of the current configuration files.

Restore(Factory reset): To reset the default setting or restore the configuration files.

Upgrade firmware: Upload and upgrade the latest firmware to replace current firmware. It takes about 1 minute to upload upgrade flash and be patient please. Caution! A corrupted image will hang up the system. And the update will reset the device setting after its done.

* Please backup your setting if you want to restore it after the updating the firmware.

Flash operations

Actions

Backup

Click "Generate archive" to download a tar archive of the current configuration files.

Download backup

Generate archive

Restore

To restore configuration files, you can upload a previously generated backup archive here. To reset the firmware to its initial state, click "Perform reset" (only possible with squashfs images).

Reset to defaults

Perform reset

Restore backup

Upload archive...

Custom files (certificates, scripts) may remain on the system. To prevent this, perform a factory-reset first.

Upgrade Firmware

Upload a sysupgrade-compatible image here to replace the running firmware.

Image

Flash image..

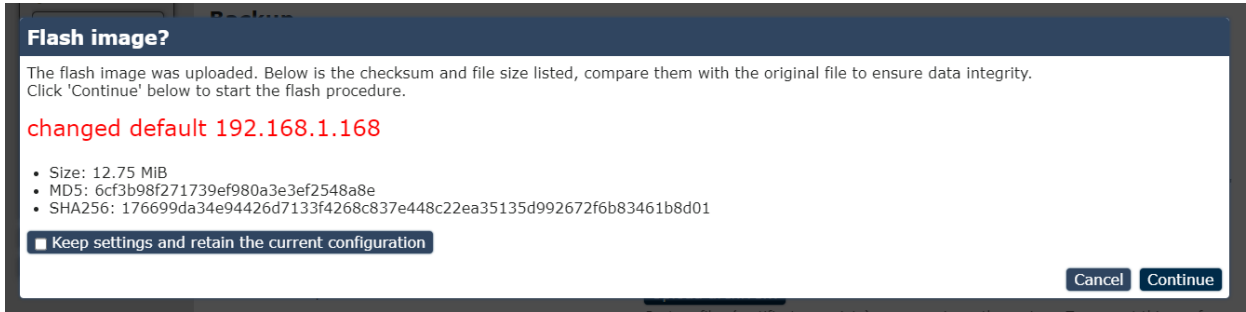
To update the 9855 W, please follow the instruction below to prevent anything happens like **update incomplete** or **hardware disable** which may be caused by wrongdoing of updating:

- 1) Turn off all chat programs including (Skype, FB, QQ, AIM, Yahoo messengeretc.)
- 2) Check to make sure that all devices are turned on safely and powered
- 3) While updating do not turn off the power
- 4) Make sure that the cable is connected firmly
- 5) Do not interrupt the update process, the update must be completely finished .
- 6) Turn off, any Spyware or antivirus software which may conflict with the update.
- 7) Update firmware in the Local Area Network (LAN)
- 8) Please change the PORT as 80
- 9) **Reboot and Do the Hardware Reset** (keep pressing RESET button for 7 secs) after update successfully.
- 10) The update will turn back to the default settings, 9855 W's devices IP address will turn back to IP: 192.168.1.168. Please open your IPEdit and Rescan it to find your device, you can check your device through MAC.
- 11) **Clear the Cookies and Cache from the temporary file of PC and browser** to avoid get the old webpage.

Note: Step 11 is vital procedure, please remember to do this after you update your device!!

Reminder: When you update the firmware, the final procedure screen will display an icon with the message "**Keep settings and retain the current configuration.**" Please refrain from clicking it if you wish to complete your firmware upgrade.

* If you wish to reset your firmware, click on the "**Keep settings and retain the current configuration**" icon. This action will save your current settings but will not upgrade your device's firmware; it will only refresh it.



4.5.6 Reboot

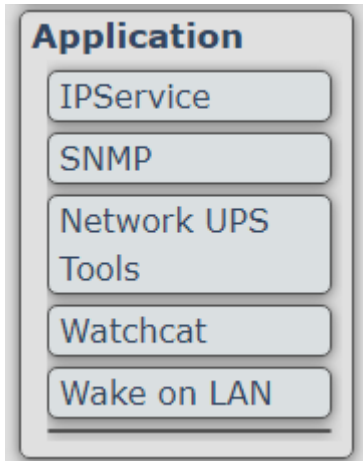
Reboots the operating system of your device.

Reboot

Reboots the operating system of your device

Perform reboot

4.6 Application



4.6.1 IP Service

In this section, user can setup :

- A. IP Server setting(Search)
- B. CNT2 (MQTT)Setting(Remote Control)

IP Service Setting (Search)	
Enable	<input type="checkbox"/>
IP Service Server	Server1 ▼
Device Name:	IPPower
Country	Country
City	City
Find IPPower device on myipedit.com	
<input type="button" value="Save"/>	

CNT(MQTT) Setting (Remote control)	
MQTT Service	IPPower ▼
Enable	<input type="checkbox"/>
Status	
<input type="button" value="Save"/>	

A. IP Service Setting (Search)

The IP SERVICE allow 9855 W to be accessed easily on the internet by our IP Power Center or IPEDIT. With this feature anyone can find its device with no problems.

IP Service Server: Allows user can find user of 9855 W on the internet without having to remember long IP Addresses. Instead user can just remember the name of user device.

IP Service Setting (Search)

Enable

IP Service Server: Server1

Device Name: IPPower

Country: Country

City: City

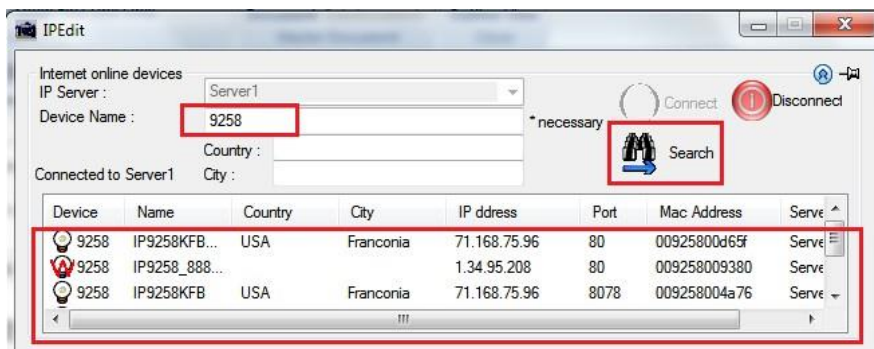
Find IPPower device on myipedit.com

- Enable : Enable or Disable this function by clicking the small box .
- IP Service Server : Custom – the server setting by yourself
Server 1- the server from our company
- Device name, Country & City :

User can search the 9855 W by Device name, Country or City.

This allows the device to be accessed easily on the Internet, user no longer have to Port Forwarding, user device to be able to use it. Only some devices are CNT compatible.

Please refer page #14 for the function of IP Server



B. CNT (MQTT) Setting (Remote control)

For developing only. 9855 W supports MQTT function. Please contact with your distributor for the details if you would like to develop own system.

CNT(MQTT) Setting (Remote control)

MQTT Service: IPPower

Enable

Status

4.6.2 SNMP

This section is for development of system integrator who is familiar with SNMP knowledge. In Authority, user can select “ Read only” or “Read / Write”

Enable	<input type="checkbox"/>
Version	v1
Authority	Read/Write
community	Read only Read/Write

In “ Trap “ type ,user can select “ trapsink “ , “ trap2sink “ or “ informsink ”

Trap type	none
host	
community	
port	
EngineID	0x80000000000007656004321

SNMP Version: IP9855 W provide V1, V2 and V3 version. V1 and V2 remain the same settings, when you switch to V3, user can see the difference in the second picture.

Enable	<input type="checkbox"/>
Version	v1
Authority	v1 v2c v3
community	private

Trap type	none
host	192.168.1.1
community	private
port	162
EngineID	0x80000000000007656004321

SNMP V3: Version V3 add new function, these are: auth, MD5 and DES

Enable	<input type="checkbox"/>
Version	v3
User	admin
auth	authPriv
MD5
DES
Trap type	none
host	192.168.1.1
community	private
port	162
EngineID	0x80000000000007656004321

- (1) auth: this function provide the certified and encryption to the device.
User can choose enable(authPriv) or disable(authNoPriv) the certified encryption.

Enable	<input type="checkbox"/>
Version	v3
User	admin
auth	authPriv
MD5
DES

- (2) MD5: Setting your password for certified.
- (3) DES: Setting your password for encryption.

Enable	<input type="checkbox"/>
Version	v3
User	admin
auth	authPriv
MD5
DES

4.6.3 Network UPS Tools

This function can detect the electricity through UPS, plug by the USB port. After setting your user name and password, move to the (CGI) section, And click to “ NUT CGI”, you can see the status of UPS.


1. Network UPS Tools: (Server):
Network UPS tools server Configuration

[Network UPS Tools \(Server\)](#) [Network UPS Tools \(Monitor\)](#) [Network UPS Tools \(CGI\)](#)

Network UPS Tools (Server)

Network UPS Tools Server Configuration

NUT Users

Username	<input type="text" value="upsmon"/>
Password	<input type="password" value="*****"/> 
Role	<input type="text" value="Master"/> ▼
<input type="text" value="-- Additional Field --"/> <input type="button" value="Add"/>	
<input type="button" value="Add"/>	

Addresses on which to listen

IP Address	<input type="text" value="0.0.0.0"/>
Port	<input type="text" value="3493"/>
<input type="button" value="Add"/>	

Driver Configuration

The name of this section will be used as UPS name elsewhere

Driver	<input type="text" value="usbhid-ups"/> ▼
Port	<input type="text" value="auto"/>
<input type="text" value="-- Additional Field --"/> <input type="button" value="Add"/>	
<input type="button" value="Add"/>	

- (1) Username: Setting the username to login
- (2) Password: Setting the password to login
- (3) Role: Switch device role to Master or Slave

Warning: Except NUT users, don't change others settings in the red square, only if you are familiar with these function, you can attempt to setting by your own.

2. Network UPS Tools: (Monitor) Network UPS tools monitoring Configuration

[Network UPS Tools \(Server\)](#) [Network UPS Tools \(Monitor\)](#) [Network UPS Tools \(CGI\)](#)

Network UPS Tools (Monitor)

Network UPS Tools Monitoring Configuration

Global Settings

RunAs User	<input type="text" value="nutmon"/> <small>upsmon drops privileges to this user</small>
Notify command	<input type="text" value="/usr/bin/notifycmd"/>
Notification defaults	-- Please choose -- Execute notify command Write to syslog
Notify when on battery	-- Please choose -- Execute notify command Write to syslog
<input type="text" value="-- Additional Field --"/> <input type="button" value="Add"/>	

UPS Master

Name of UPS	<input type="text" value="myups"/> <small>As configured by NUT</small>	<input type="button" value="Delete"/>
Hostname or address of UPS	<input type="text" value="localhost"/>	
Power value	<input type="text" value="1"/>	
Username	<input type="text" value="upsmon"/>	
Password	<input type="password" value="*****"/>	<input type="button" value="+"/>
<input type="text" value="-- Additional Field --"/> <input type="button" value="Add"/>		
<input type="button" value="Add"/>		


3. Network UPS Tools: (CGI) Network UPS tools CGI Configuration

[Network UPS Tools \(Server\)](#) [Network UPS Tools \(Monitor\)](#) [Network UPS Tools \(CGI\)](#)

Network UPS Tools (CGI)

Network UPS Tools CGI Configuration

NUT CGI Access

Go to NUT CGI 

Host

UPS name	<input type="text" value="myups"/> <small>As configured by NUT</small>	<input type="button" value="Delete"/>
Hostname or IP address	<input type="text"/>	
Display name	<input type="text" value="root"/>	
<input type="text" value="-- Additional Field --"/> <input type="button" value="Add"/>		
<input type="button" value="Add"/>		

Control UPS via CGI

Enable

NUT CGI Access

Click the " Go to Nut CGI " icon, you will see the screen show network UPS Tools



Statistics: Show the detect of UPS status.

Settings: (Under-development, please wait for advice)



Network UPS Tools upsstats 19.07.3-95-g1a68372
Tue Jan 17 05:18:30 UTC 2023

System	Model	Status	Battery	Input (VAC)	Output (VAC)	Load (%)	UPS Temp	Battery Runtime	Data Tree
root	HID UPS Battery	ONLINE	99 %	106.0	106.0	0 %		00:13:04	All data



4.6.4 Watchcat

Watchcat allows to configure a periodic reboot and/or when internet connection has been lost for a certain period of time.

(1) Operating mode: Each mode show different setting options.

1. Ping Reboot:

Reboot on internet connection mode: Detect the lost internet based on the Ping host and the period you setting.

For example, when you set the Ping host :192.168.1.128, and the period set on 1d=1 day or 16 h= 16 hours. If the detect no response, it will reboot the device automatically.

Watchcat

Here you can set up several checks and actions to take in the event that a host becomes unreachable. Click the **Add** button at the bottom to set up more than one action.

Watchcat

These rules will govern how this device reacts to network events.

General Settings

Mode	<input type="text" value="Ping Reboot"/> ▼ Ping Reboot: Reboot this device if a ping to a specified host fails for a specified duration of time. Periodic Reboot: Reboot this device after a specified interval of time. Restart Interface: Restart a network interface if a ping to a specified host fails for a specified duration of time. Run Script: Run a script if a ping to a specified host fails for a specified duration of time.
Period	<input type="text" value="6h"/> In Periodic Reboot mode, it defines how often to reboot. In Ping Reboot mode, it defines the longest period of time without a reply from the Host To Check before a reboot is engaged. In Network Restart or Run Script mode, it defines the longest period of time without a reply from the Host to Check before the interface is restarted or the script is run. The default unit is seconds, without a suffix, but you can use the suffix m for minutes, h for hours or d for days. Examples: <ul style="list-style-type: none">• 10 seconds would be: 10 or 10s• 5 minutes would be: 5m• 1 hour would be: 1h• 1 week would be: 7d
Host To Check	<input type="text" value="8.8.8.8"/> IP address or hostname to ping.
Address family for pinging the host	<input type="text" value="any"/> ▼
Check Interval	<input type="text" value="30s"/> How often to ping the host specified above. The default unit is seconds, without a suffix, but you can use the suffix m for minutes, h for hours or d for days. Examples: <ul style="list-style-type: none">• 10 seconds would be: 10 or 10s• 5 minutes would be: 5m• 1 hour would be: 1h• 1 week would be: 7d
Ping Packet Size	<input type="text" value="Standard: 56 bytes"/> ▼
Force Reboot Delay	<input type="text" value="30"/> Applies to Ping Reboot and Periodic Reboot modes When rebooting the router, the service will trigger a soft reboot. Entering a non-zero value here will trigger a delayed hard reboot if the soft reboot were to fail. Enter the number of seconds to wait for the soft reboot to fail or use 0 to disable the forced reboot delay.
Interface	<input type="text" value="unspecified"/> ▼ Interface to monitor and/or restart

Save & Apply ▼ **Save** **Reset**

1-1 Period:

In Periodic Reboot mode, it defines how often to reboot.

In Ping Reboot mode, it defines the longest period of time without a reply from the Host To Check before a reboot is engaged.

In Network Restart or Run Script mode, it defines the longest period of time without a reply from the Host to Check before the interface is restarted or the script is run.

The default unit is seconds, without a suffix, but you can use the suffix m for minutes, h for hours or d for days.

Examples:

10 seconds would be: 10 or 10s

5 minutes would be: 5m

1 hour would be: 1h

1 week would be: 7d

1-2 Host to Check: IP address or hostname to ping

1-3 Address family for pinging the host: Three options to choose- Any, IPv4, IPv6

1-4 Check Interval:

How often to ping the host specified above.

The default unit is seconds, without a suffix, but you can use the suffix m for minutes, h for hours or d for days.

Examples:

10 seconds would be: 10 or 10s

5 minutes would be: 5m

1 hour would be: 1h

1 week would be: 7d

1-5 Force reboot delay: Applies to Ping Reboot modes

When rebooting the router, the service will trigger a soft reboot, Entering a non-zero value here will trigger a delayed hard reboot if the soft reboot were to fail. Enter the number of seconds to wait for the soft reboot to fail or use 0 to disable the forced reboot delay.

1-6 Interface: Interface to monitor and/or restart.

2. Periodic reboot mode: In this mode, ping host and period are removed. The device will reboot based on the period time you set.
 For example, if the device set 24h to reboot, the reboot will follow the setting until the times up or reset the setting.

Watchcat

Here you can set up several checks and actions to take in the event that a host becomes unreachable. Click the **Add** button at the bottom to set up more than one action.

Watchcat

These rules will govern how this device reacts to network events.

General Settings

Mode	<input type="text" value="Ping Reboot"/> <p>Ping Reboot: Reboot this device if a ping to a specified host fails for a specified duration of time. Periodic Reboot: Reboot this device after a specified interval of time. Restart Interface: Restart a network interface if a ping to a specified host fails for a specified duration of time. Run Script: Run a script if a ping to a specified host fails for a specified duration of time.</p>
Period	<input type="text" value="6h"/> <p>In Periodic Reboot mode, it defines how often to reboot. In Ping Reboot mode, it defines the longest period of time without a reply from the Host To Check before a reboot is engaged. In Network Restart or Run Script mode, it defines the longest period of time without a reply from the Host to Check before the interface is restarted or the script is run.</p> <p>The default unit is seconds, without a suffix, but you can use the suffix m for minutes, h for hours or d for days.</p> <p>Examples:</p> <ul style="list-style-type: none"> • 10 seconds would be: 10 or 10s • 5 minutes would be: 5m • 1 hour would be: 1h • 1 week would be: 7d
Host To Check	<input type="text" value="8.8.8.8"/> <p>IP address or hostname to ping.</p>
Address family for pinging the host	<input type="text" value="any"/>
Check Interval	<input type="text" value="30s"/> <p>How often to ping the host specified above.</p> <p>The default unit is seconds, without a suffix, but you can use the suffix m for minutes, h for hours or d for days.</p> <p>Examples:</p> <ul style="list-style-type: none"> • 10 seconds would be: 10 or 10s • 5 minutes would be: 5m • 1 hour would be: 1h • 1 week would be: 7d
Ping Packet Size	<input type="text" value="Standard: 56 bytes"/>
Force Reboot Delay	<input type="text" value="30"/> <p>Applies to Ping Reboot and Periodic Reboot modes When rebooting the router, the service will trigger a soft reboot. Entering a non-zero value here will trigger a delayed hard reboot if the soft reboot were to fail. Enter the number of seconds to wait for the soft reboot to fail or use 0 to disable the forced reboot delay.</p>
Interface	<input type="text" value="unspecified"/> <p>Interface to monitor and/or restart</p>

3. Restart Interface mode: Restart a network interface if a ping to a specified host fails for a specified duration of time.

Here you can set up several checks and actions to take in the event that a host becomes unreachable. Click the **Add** button at the bottom to set up more than one action.

Watchcat

These rules will govern how this device reacts to network events.

General Settings

Mode	<input type="text" value="Restart Interface"/>	<p>Ping Reboot: Reboot this device if a ping to a specified host fails for a specified duration of time. Periodic Reboot: Reboot this device after a specified interval of time. Restart Interface: Restart a network interface if a ping to a specified host fails for a specified duration of time. Run Script: Run a script if a ping to a specified host fails for a specified duration of time.</p>
Period	<input type="text" value="6h"/>	<p>In Periodic Reboot mode, it defines how often to reboot. In Ping Reboot mode, it defines the longest period of time without a reply from the Host To Check before a reboot is engaged. In Network Restart or Run Script mode, it defines the longest period of time without a reply from the Host to Check before the interface is restarted or the script is run.</p> <p>The default unit is seconds, without a suffix, but you can use the suffix m for minutes, h for hours or d for days.</p> <p>Examples:</p> <ul style="list-style-type: none">• 10 seconds would be: 10 or 10s• 5 minutes would be: 5m• 1 hour would be: 1h• 1 week would be: 7d
Host To Check	<input type="text" value="8.8.8.8"/>	<p>IP address or hostname to ping.</p>
Address family for pinging the host	<input type="text" value="any"/>	
Check Interval	<input type="text" value="30s"/>	<p>How often to ping the host specified above.</p> <p>The default unit is seconds, without a suffix, but you can use the suffix m for minutes, h for hours or d for days.</p> <p>Examples:</p> <ul style="list-style-type: none">• 10 seconds would be: 10 or 10s• 5 minutes would be: 5m• 1 hour would be: 1h• 1 week would be: 7d
Ping Packet Size	<input type="text" value="Standard: 56 bytes"/>	
Interface	<input type="text" value="unspecified"/>	<p>Interface to monitor and/or restart</p>
Name of ModemManager Interface	<input type="text" value="unspecified"/>	<p>Applies to Ping Reboot and Restart Interface modes If using ModemManager, you can have Watchcat restart your ModemManger interface by specifying its name.</p>
Unlock Modem Bands	<input type="checkbox"/>	<p>If using ModemManager, then before restarting the interface, set the modem to be allowed to use any band.</p>

3-1 Name of ModemManager Interface:

Applies to Ping Reboot and Restart interface modes it using ModemManager, you can have Watchcat restart your ModemManager interface by Specifying its name.

3-2 Unlock Modem Bands:

If using ModemManager, then before restarting the interface, set the modem to be allowed to use any bond

4. Run Script: Run a script if a ping to a specified host fails for a specified duration of time.

Watchcat

These rules will govern how this device reacts to network events.

General Settings

Mode	<input type="text" value="Run Script"/>	<p>Ping Reboot: Reboot this device if a ping to a specified host fails for a specified duration of time. Periodic Reboot: Reboot this device after a specified interval of time. Restart Interface: Restart a network interface if a ping to a specified host fails for a specified duration of time. Run Script: Run a script if a ping to a specified host fails for a specified duration of time.</p>
Script to run	<input type="text" value="/etc/watchcat.user.sh"/>	<p>Script to run when the host has not responded for the specified duration of time. The script is passed the interface name as \$1</p>
Period	<input type="text" value="6h"/>	<p>In Periodic Reboot mode, it defines how often to reboot. In Ping Reboot mode, it defines the longest period of time without a reply from the Host To Check before a reboot is engaged. In Network Restart or Run Script mode, it defines the longest period of time without a reply from the Host to Check before the interface is restarted or the script is run.</p> <p>The default unit is seconds, without a suffix, but you can use the suffix m for minutes, h for hours or d for days.</p> <p>Examples:</p> <ul style="list-style-type: none">• 10 seconds would be: 10 or 10s• 5 minutes would be: 5m• 1 hour would be: 1h• 1 week would be: 7d
Host To Check	<input type="text" value="8.8.8.8"/>	<p>IP address or hostname to ping.</p>
Address family for pinging the host	<input type="text" value="any"/>	
Check Interval	<input type="text" value="30s"/>	<p>How often to ping the host specified above.</p> <p>The default unit is seconds, without a suffix, but you can use the suffix m for minutes, h for hours or d for days.</p> <p>Examples:</p> <ul style="list-style-type: none">• 10 seconds would be: 10 or 10s• 5 minutes would be: 5m• 1 hour would be: 1h• 1 week would be: 7d
Ping Packet Size	<input type="text" value="Standard: 56 bytes"/>	
Interface	<input type="text" value="unspecified"/>	<p>Interface to monitor and/or restart</p>

4-1 Script to run: Script to run when the host has not responded for the specified duration of time. The script is passed the interface name as \$1

4.6.5 Wake on Lan

Wake on LAN is a mechanism to remotely boot computers in the local network.

Wake on LAN

Wake on LAN is a mechanism to remotely boot computers in the local network.

Network interface to use Specifies the interface the WoL packet is sent on

Host to wake up Choose the host to wake up or enter a custom MAC address to use

Send to broadcast address

Wake up host

- Network Interface to use: Specifies the interface the WoL, packet is sent on.
 - (1) Broadcast on all interfaces: All the function below will broadcast at the same time.
 - (2) eth0: Device's MAC address
 - (3) wlan0: Wireless lan
 - (4) br-lan: Ethernet
- Host to wake up: Choose the host to wake up or enter a custom MAC address to use.
- Send to broadcast address: Enable or disable the function

Support the wireless connection:

Click the "Network interface to use", and choose the Wireless Network.

***Note:** You must setting your wireless connection first, or the WOL will not appears this option.

To setting your wireless, please refer to the 4.4.2 (P.35)

IP_POWER 2024/06/19 07:11:15

Wake on LAN

Wake on LAN is a mechanism to remotely boot computers in the local network.

Network interface to use Specifies the interface the WoL packet is sent on

Host to wake up Choose the host to wake up or enter a custom MAC address to use

Send to broadcast address

Wake up host

5. Other ways to control

Besides HTTPS/CGI command and SSH we supply here, 9855 W also support SNMP (MIB), Please check page #47 to check and enable the function.

5.1 CGI HTTP Commands

CGI Commands allow you to easily integrate the 9855 W with other systems and programs. Pleaseread the instructions carefully on how to use the Http:// Commands

To use http:// Commands open up a web browser and type in the command that you would like to use.

1. User authorization .There are 3 formats :

For example : IP address 192.168.1.18 , Username : root. Password : 12345678

1.1 <http://root:12345678@192.168.1.18/set.cmd?cmd=getpower>

1.2 <http://192.168.1.18/set.cmd?user=root+pass=12345678+cmd=getpower>

The above 2 way also for HTTPS

2. Command

set.cmd?cmd=

All command do not separate capital / lower case , the connect symbol between commands can be “+” , “&” and “?”.

2.1 To get firmware version : getversion

<http://192.168.1.18/set.cmd?cmd=getversion>

System return :

```
<!--CGI-DATABEG-->
```

```
<p>
```

```
Version=v1.09_418</p>
```

```
<!--CGI-DATAEND-->
```

2.2 To get MACaddress: getmac

<http://192.168.1.18/set.cmd?cmd=getmac>

System return:

```
<!--CGI-DATABEG-->
```

```
<p>
```

```
mac=007628000284</p>
```

```
<!--CGI-DATAEND-->
```

2.3 To get the status of power on/ off: getpower

<http://192.168.1.18/set.cmd?cmd=getpower>

System return:

CGI Command : Data follows

p61=0,

2.4 To set the power on / off : setpower&p6x=0 or 1

p6x=0 means off, p6x=1 means ON,

Example : Turn on POWER1 and turn off POWER1:

<http://192.168.1.18/set.cmd?cmd=setpower&p61=1>

System return: CGI Command : Data follows p61=1, p61=0

2.5 Setup power to reboot as RESET: setpowercycle& p6x=delayTime

; dealyTime mean the time (second) waitingfor reset

For example :

<http://192.168.1.18/set.cmd?cmd=setpowercycle&p61=5>

System return: CGI Command : Data follows

p61 cycle ok

2.6 Get current Amp value : getcurrent

For example :

<http://192.168.1.18/set.cmd?cmd=getcurrent>

System return:

```
<!--CGI-DATABEG-->
```

```
<p>
```

```
c61= 0.0, temp=28.3</p>
```

```
<!--CGI-DATAEND-->
```

5.2 SSH commands

To login to the 9855 W in SSH

- 1) Open the putty and select SSH, after typing your ID address, putty will appears the command line and ask for login.

Login : root

Password : 12345678 (**Note:** The password won't display when you type)

10.33.122.2 - PuTTY

```
login as: root
root@10.33.122.2's password: █
```

- (2) Command list:

```
root@IPPower: ~
root@IPPower:~# ioctrl -h
**-----**
Usage: ioctrl
[-h | --help ].....: display this help
[-s | --setpower p6l=1 or 0].....: turn on/off ports on the device
[-l | --setcycle p6l=x (x=1~9999)].....: outlet, will turn 'off to on'
[-p | --getpower ]..: get the on/off status of the device
[-c | --current ].....: get the current value of the device
[-v | --getvoltage ].....: get the voltage value of the device
[-t | --temp ].....: get the temperature value of the device
[-r | --reboot ].....: System Restart
[-f | --version ].....: display version information
-----
root@IPPower:~# ioctrl -s p6=1
p6l ok,
root@IPPower:~# ioctrl -c
Current value: 0.0
root@IPPower:~# ioctrl -v
Voltage value: 105.00
root@IPPower:~# ioctrl -t
Temperature value: 30.30
Fahrenheit value: 86.5
root@IPPower:~# ioctrl -p
Power Status: 1
root@IPPower:~# █
```

6. FAQ :

Q1: Why can't I see the 9855 W's IP address in IPEDIT.exe

Ans.:

Please check if your 9855 W had boot up successfully. There is a short beep sound to show 9855 W boot up successfully after device power up for 45 seconds.

There are several possibilities for this issue as 9855 W boot up successfully :

1. Segment of your PC :

Please check the PC you use is under same LAN/ network / segment as 9855 W.

2. Firewall / Antivirus protection :

Please turn off some Anti-Virus / online chatting software.

3. Network card :

IPEDIT can only work for the PC with one network card. If there are more than 1 network card, include dynamic network card, please disable one and make sure the one you selected is Under the same segment with IP9855 W

If connect to PC directly, please wait for the boot up beep first and then connect the network cable to your PC. And the default IP is 192.168.1.168

Q2: Why can't I see my 9855 W after arrange the port forwarding in my router?

Ans : Please make sure the Network Type (Gateway) is correct - LAN or WAN .

Q3: Why can't I receive e-mail ?

Ans: Please check the DNS and GATEWAY setting first (Check user router or ask user ISP company).There is a test button for checking the setting success or fail to send e-mail.

Notice :

Under DHCP mode - 9855 W will get the Network type (Gateway) information automatically. But if under Static mode, please do fill up the correct Network type (gateway).

Step : Connect user PC and 9855 W to a router by LAN. Then **reboot 9855 W (MUST DO)**. After 45 seconds with a long beep sound, user can find the LAN IP of 9855 W by IPEIDT.exe

Q4: How can I reset to default:

Ans : Keep pressing the button of "RESET for 7 seconds and then release it.

To reset to original manufacture settings : press the reset button with a sharpen pin for 7 seconds then RELEASE. There will be total 4 beeps sound which means reset start and 9855 W will be rebooted itself -there is one beep after reboot, and most information go back to default setting (LAN IP)